

POTEA-Specific antibody

Catalog Number: 114067

Product name

POTEA-Specific antibody

Specificity

human; other species not tested.

Antibody description

POTEA-Specific Rabbit Polyclonal antibody.
Positive IHC detected in human ovary. Positive IF detected in HepG2.

Preparation

This antibody was obtained by immunization of Peptide (Accession Number: NM_001002920).
Purification method: Antigen affinity purified.

Formulation

PBS with 0.02% sodium azide and 50% glycerol
pH 7.3.

Storage

Store at -20°C. DO NOT ALIQUOT

Clonality

Polyclonal

Ig Type

Rabbit IgG

Applications

ELISA, IHC, IF

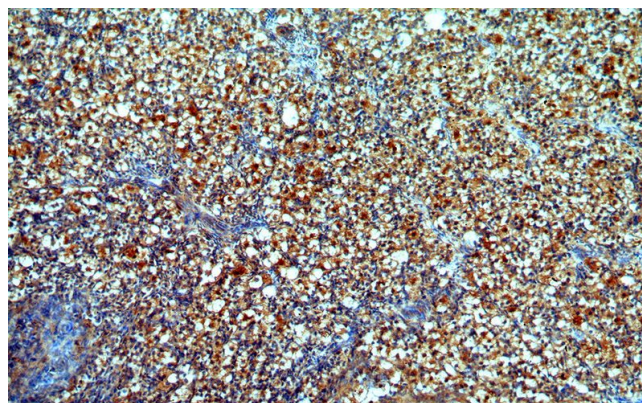
Dilutions

Recommended Dilution:

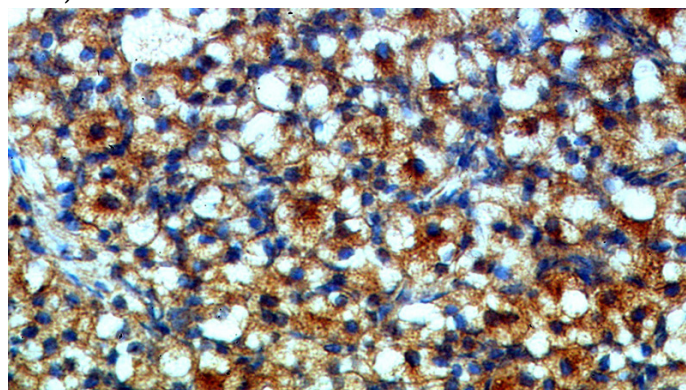
IHC: 1:20-1:200

IF: 1:10-1:100

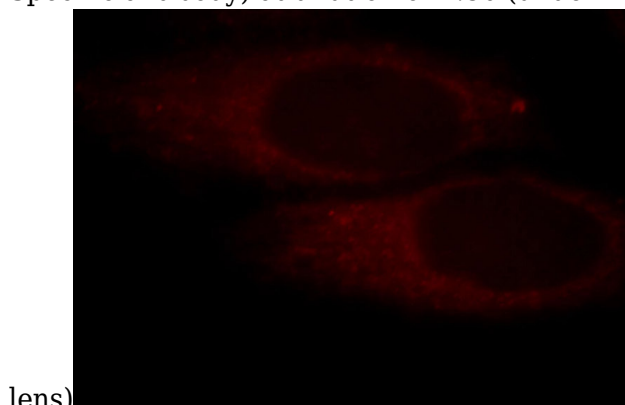
Validations



Immunohistochemical of paraffin-embedded human ovary using Catalog No:114067(POTEA-Specific antibody) at dilution of 1:50 (under 10x lens)



Immunohistochemical of paraffin-embedded human ovary using Catalog No:114067(POTEA-Specific antibody) at dilution of 1:50 (under 40x



lens)

Immunofluorescent analysis of HepG2 cells, using POTEA antibody Catalog No:114067 at 1:25 dilution and Rhodamine-labeled goat anti-rabbit IgG (red).