

POTEA antibody

Catalog Number: 114066

Product name

POTEA antibody

Specificity

Human, Mouse; other species not tested.

Antibody description

POTEA Rabbit Polyclonal antibody. Positive WB detected in human testis tissue, mouse skeletal muscle tissue. Positive IHC detected in human prostate cancer tissue, human ovary tissue, human testis tissue. Observed molecular weight by Western-blot: 53 kDa

Preparation

This antibody was obtained by immunization of POTEA recombinant protein (Accession Number: NM_001005365). Purification method: Antigen affinity purified.

Formulation

PBS with 0.1% sodium azide and 50% glycerol pH 7.3.

Storage

Store at -20°C. DO NOT ALIQUOT

Clonality

Polyclonal

Ig Type

Rabbit IgG

Applications

ELISA, WB, IHC

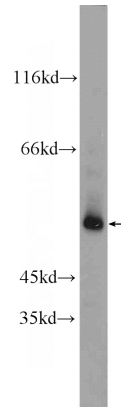
Dilutions

Recommended Dilution:

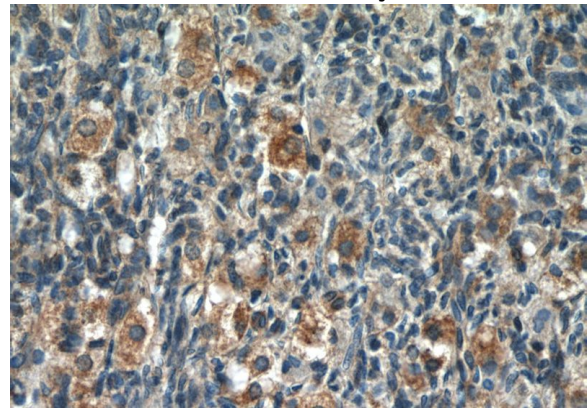
WB: 1:200-1:1000

IHC: 1:20-1:200

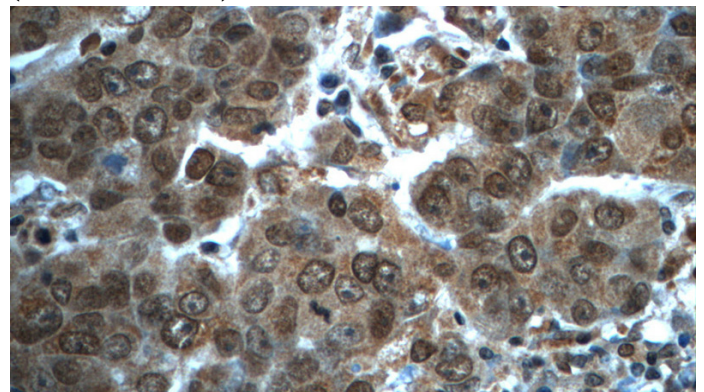
Validations



human testis tissue were subjected to SDS PAGE followed by western blot with Catalog No:114066(POTEA Antibody) at dilution of 1:300



Immunohistochemistry of paraffin-embedded human prostate cancer tissue slide using Catalog No:114066(POTEA Antibody) at dilution of 1:50 (under 40x lens)



Immunohistochemistry of paraffin-embedded human prostate cancer tissue slide using Catalog No:114066(POTEA Antibody) at dilution of 1:50

POTEA antibody



Catalog Number: 114066

(under 40x lens)