

# POPDC3 antibody



Catalog Number: 114063

## Product name

POPDC3 antibody

WB: 1:500-1:5000

IP: 1:500-1:5000

## Specificity

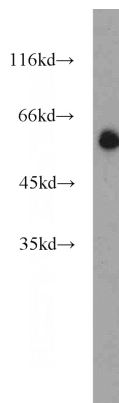
Human, Mouse, Rat; other species not tested.

IHC: 1:20-1:200

## Antibody description

POPDC3 Rabbit Polyclonal antibody. Positive IP detected in HeLa cells. Positive WB detected in COLO 320 cells, HEK-293 cells. Positive IHC detected in human placenta tissue, human lung tissue, human spleen tissue, human testis tissue. Observed molecular weight by Western-blot: 60 kDa

## Validations



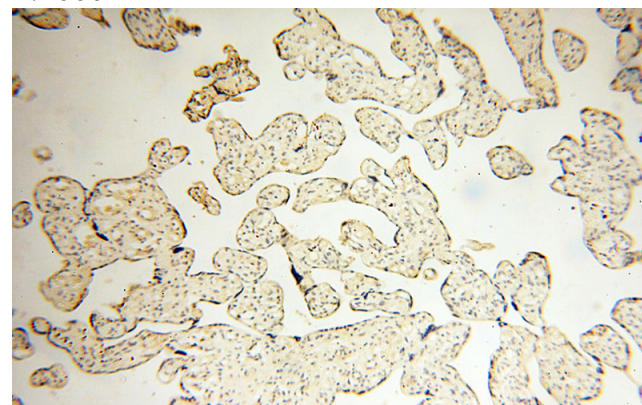
## Preparation

This antibody was obtained by immunization of POPDC3 recombinant protein (Accession Number: NM\_022361). Purification method: Antigen affinity purified.

COLO 320 cells were subjected to SDS PAGE followed by western blot with Catalog No:114063(POPDC3 antibody) at dilution of 1:1000

## Formulation

PBS with 0.1% sodium azide and 50% glycerol pH 7.3.



## Storage

Store at -20°C. DO NOT ALIQUOT

## Clonality

Polyclonal

## Ig Type

Rabbit IgG

Immunohistochemical of paraffin-embedded human placenta using Catalog No:114063(POPDC3 antibody) at dilution of 1:50 (under 10x lens)

## Applications

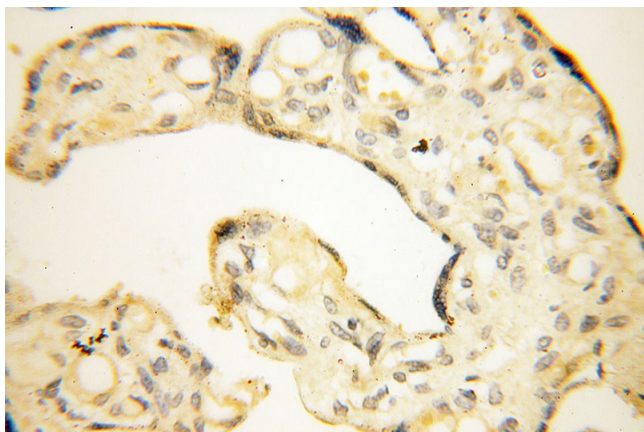
ELISA, WB, IHC, IP

## Dilutions

Recommended Dilution:

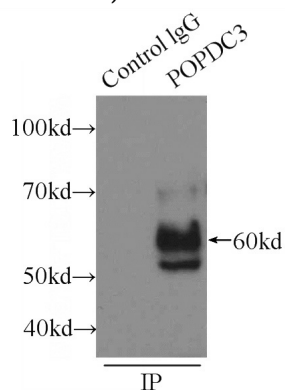
# POPDC3 antibody

Catalog Number: 114063



Immunohistochemical of paraffin-embedded human placenta using Catalog No:114063(POPDC3 antibody) at dilution of 1:50

(under 40x lens)



IP Result of anti-POPDC3 (IP:Catalog No:114063, 3ug; Detection:Catalog No:114063 1:1000) with HeLa cells lysate 220ug.