

# POM121 antibody



Catalog Number: 114056

## Product name

POM121 antibody

IHC: 1:20-1:200

IF: 1:10-1:100

## Specificity

Human, Rat; other species not tested.

## Antibody description

POM121 Rabbit Polyclonal antibody. Positive WB detected in HeLa cells. Positive IF detected in HepG2 cells. Positive IHC detected in human cervical cancer tissue, human colon tissue, rat colon tissue. Observed molecular weight by Western-blot: 140-150 kDa

## Preparation

This antibody was obtained by immunization of POM121 recombinant protein (Accession Number: NM\_001387685). Purification method: Antigen affinity purified.

## Formulation

PBS with 0.02% sodium azide and 50% glycerol pH 7.3.

## Storage

Store at -20°C. DO NOT ALIQUOT

## Clonality

Polyclonal

## Ig Type

Rabbit IgG

## Applications

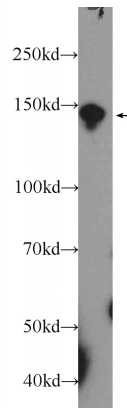
ELISA, WB, IHC, IF

## Dilutions

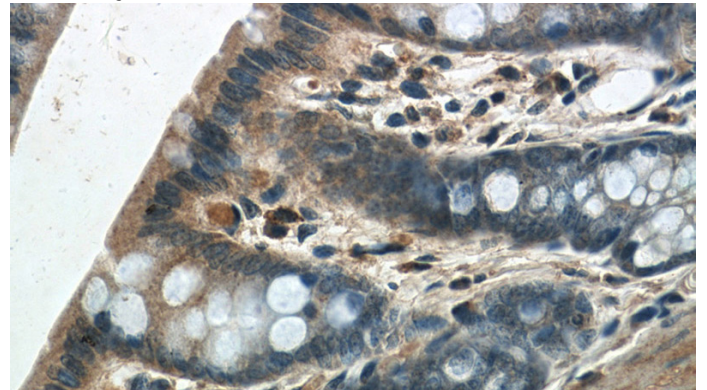
Recommended Dilution:

WB: 1:200-1:1000

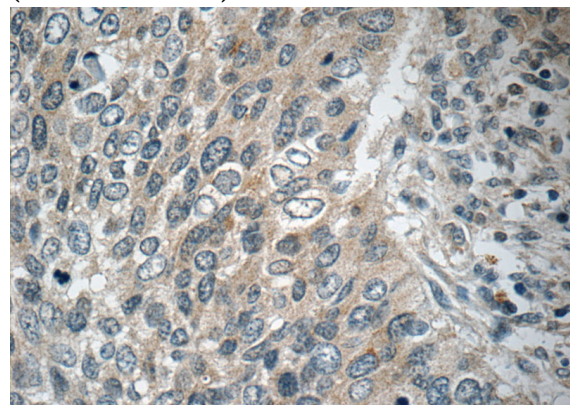
## Validations



HeLa cells were subjected to SDS PAGE followed by western blot with Catalog No:114056(POM121 Antibody) at dilution of 1:300



Immunohistochemistry of paraffin-embedded rat colon tissue slide using Catalog No:114056(POM121 Antibody) at dilution of 1:50 (under 40x lens)



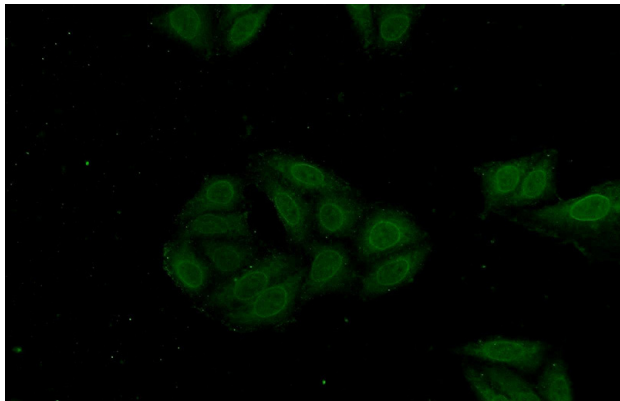
Immunohistochemistry of paraffin-embedded

# POM121 antibody

Catalog Number: 114056

---

human cervical cancer tissue slide using Catalog No:114056(POM121 Antibody) at dilution of 1:50 (under 40x lens)



Immunofluorescent analysis of HepG2 cells using Catalog No:114056(POM121 Antibody) at dilution of 1:25 and Alexa Fluor 488-conjugated AffiniPure Goat Anti-Rabbit IgG(H+L)