

PMPCB antibody

Catalog Number: 114028

Product name

PMPCB antibody

WB: 1:500-1:5000

IP: 1:200-1:2000

Specificity

Human, Mouse, Rat; other species not tested.

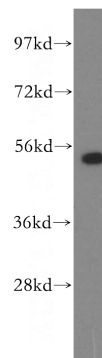
IHC: 1:20-1:200

IF: 1:10-1:100

Antibody description

PMPCB Rabbit Polyclonal antibody. Positive IF detected in HepG2 cells. Positive IHC detected in human lung cancer tissue. Positive WB detected in MCF7 cells, HepG2 cells, human liver tissue, MCF-7 cells, rat liver tissue. Positive IP detected in MCF-7 cells. Observed molecular weight by Western-blot: 43-52 kDa

Validations



Preparation

This antibody was obtained by immunization of PMPCB recombinant protein (Accession Number: BC010398). Purification method: Antigen affinity purified.

MCF7 cells were subjected to SDS PAGE followed by western blot with Catalog No:114028(PMPCB antibody) at dilution of 1:500

Formulation

PBS with 0.02% sodium azide and 50% glycerol pH 7.3.

Storage

Store at -20°C. DO NOT ALIQUOT

Clonality

Polyclonal

Ig Type

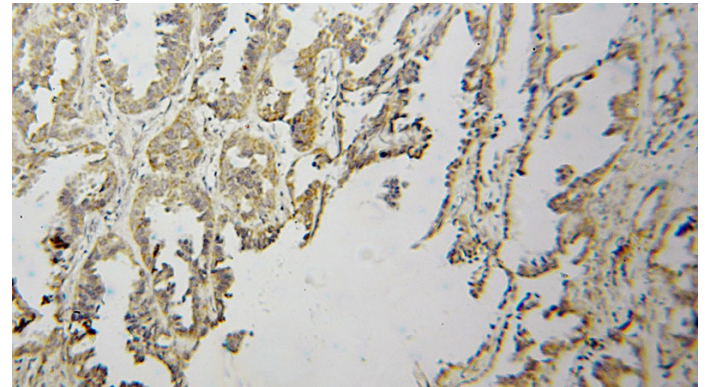
Rabbit IgG

Applications

ELISA, WB, IHC, IP, IF

Dilutions

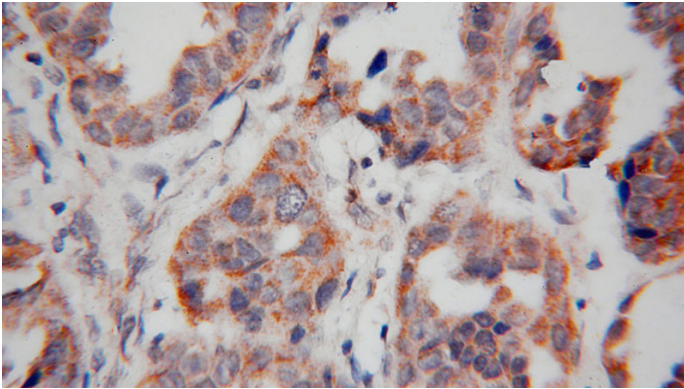
Recommended Dilution:



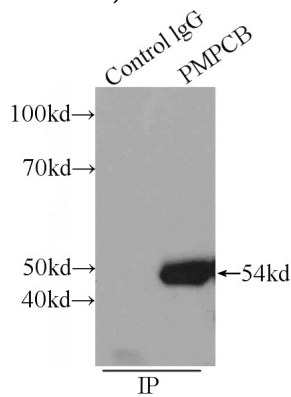
Immunohistochemical of paraffin-embedded human lung cancer using Catalog No:114028(PMPCB antibody) at dilution of 1:100 (under 10x lens)

PMPCB antibody

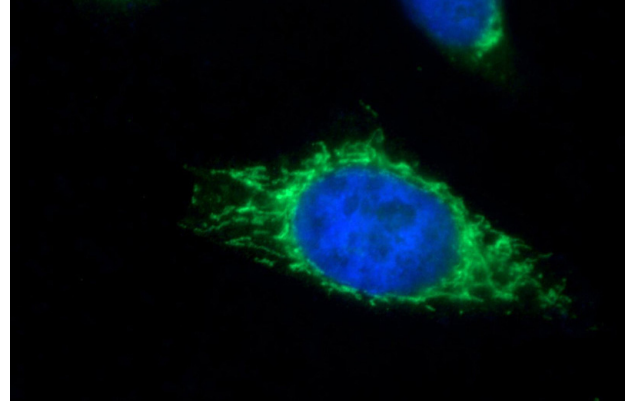
Catalog Number: 114028



Immunohistochemical of paraffin-embedded human lung cancer using Catalog No:114028(PMPCB antibody) at dilution of 1:100 (under 40x lens)



IP Result of anti-PMPCB (IP:Catalog No:114028, 3ug; Detection:Catalog No:114028 1:500) with MCF-7 cells lysate 2560ug.



Immunofluorescent analysis of HepG2 cells using Catalog No:114028(PMPCB Antibody) at dilution of 1:25 and Alexa Fluor 488-conjugated AffiniPure Goat Anti-Rabbit IgG(H+L)