

# PMM2 antibody

Catalog Number: 114026

## Product name

PMM2 antibody

## Specificity

Human, Mouse, Rat; other species not tested.

## Antibody description

PMM2 Rabbit Polyclonal antibody. Positive IF detected in HepG2 cells. Positive IHC detected in human breast cancer tissue. Positive WB detected in HepG2 cells, HeLa cells. Positive IP detected in mouse lung tissue. Observed molecular weight by Western-blot: 28-30 kDa

## Preparation

This antibody was obtained by immunization of PMM2 recombinant protein (Accession Number: NM\_000303). Purification method: Antigen affinity purified.

## Formulation

PBS with 0.1% sodium azide and 50% glycerol pH 7.3.

## Storage

Store at -20°C. DO NOT ALIQUOT

## Clonality

Polyclonal

## Ig Type

Rabbit IgG

## Applications

ELISA, IHC, WB, IP, IF

## Dilutions

Recommended Dilution:

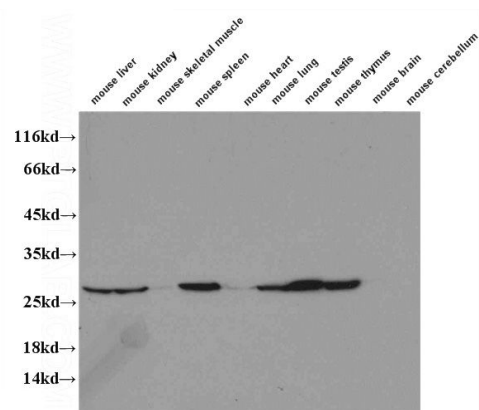
WB: 1:500-1:5000

IP: 1:500-1:5000

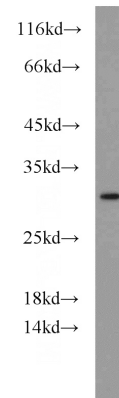
IHC: 1:20-1:200

IF: 1:20-1:200

## Validations

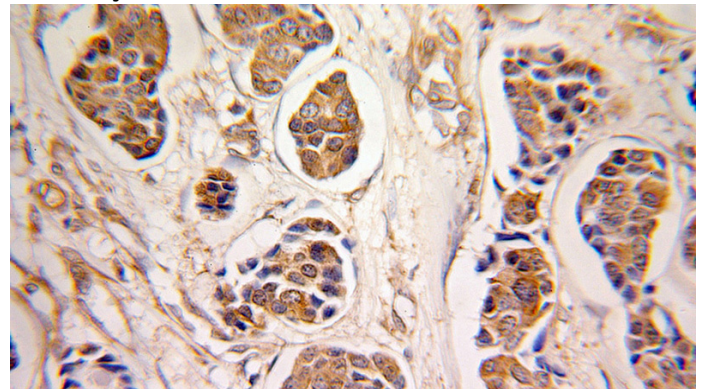


WB results of Catalog No:114026(PMM2 antibody)



on several lysates.

HepG2 cells were subjected to SDS PAGE followed by western blot with Catalog No:114026(PMM2 antibody) at dilution of 1:1000

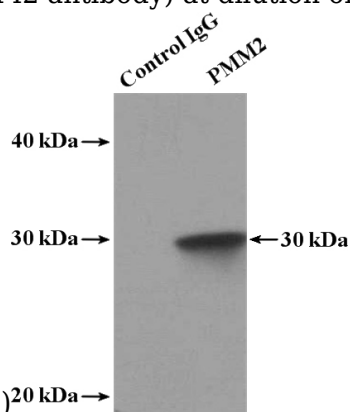


Immunohistochemical of paraffin-embedded human breast cancer using Catalog

# PMM2 antibody

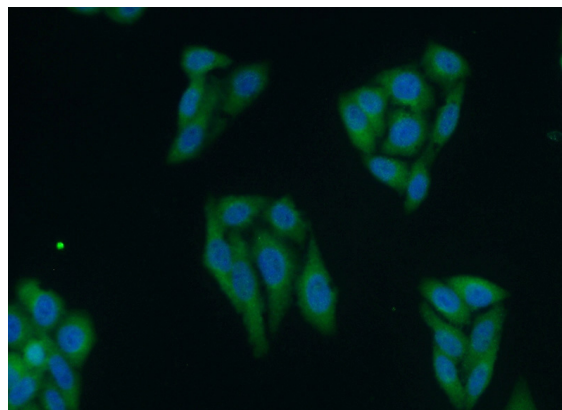
Catalog Number: 114026

No:114026(PMM2 antibody) at dilution of 1:100



(under 25x lens)<sup>20 kDa</sup>→

IP Result of anti-PMM2 (IP:Catalog No:114026, 4ug; Detection:Catalog No:114026 1:1000) with mouse lung tissue lysate 3600ug.



Immunofluorescent analysis of HepG2 cells using Catalog No:114026(PMM2 Antibody) at dilution of 1:50 and Alexa Fluor 488-conjugated AffiniPure Goat Anti-Rabbit IgG(H+L)