

# PML antibody



Catalog Number: 114024

## Product name

PML antibody

## Specificity

Human; other species not tested.

## Antibody description

PML Rabbit Polyclonal antibody. Positive IP detected in HEK-293 cells. Positive WB detected in HEK-293 cells. Observed molecular weight by Western-blot: 120 kDa

## Preparation

This antibody was obtained by immunization of PML recombinant protein (Accession Number: NM\_033250). Purification method: Antigen affinity purified.

## Formulation

PBS with 0.1% sodium azide and 50% glycerol pH 7.3.

## Storage

Store at -20°C. DO NOT ALIQUOT

## Clonality

Polyclonal

## Ig Type

Rabbit IgG

## Applications

ELISA, WB, IP

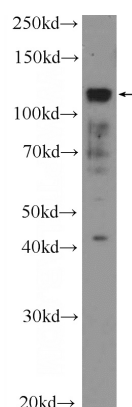
## Dilutions

Recommended Dilution:

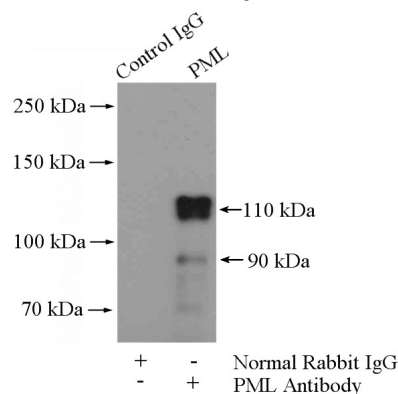
WB: 1:200-1:1000

IP: 1:200-1:2000

## Validations



HEK-293 cells were subjected to SDS PAGE followed by western blot with Catalog No:114024(PML Antibody) at dilution of 1:300



IP Result of anti-PML (IP:Catalog No:114024, 4ug; Detection:Catalog No:114024 1:500) with HEK-293 cells lysate 3200ug.