

# POLD2 antibody



Catalog Number: 113998

---

## Product name

Polyclonal

POLD2 antibody

## Ig Type

## Specificity

Rabbit IgG

Human,Mouse,Rat; other species not tested.

## Applications

## Antibody description

ELISA, WB

POLD2 Rabbit Polyclonal antibody. Positive WB detected in HepG2 cells, HEK-293 cells, mouse pancreas tissue, SGC-7901 cells. Observed molecular weight by Western-blot: 52kd

## Dilutions

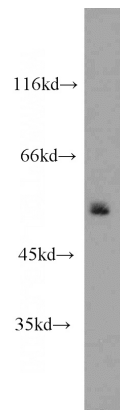
Recommended Dilution:

WB: 1:500-1:5000

## Preparation

This antibody was obtained by immunization of POLD2 recombinant protein (Accession Number: NM\_001127218). Purification method: Antigen affinity purified.

## Validations



## Formulation

PBS with 0.1% sodium azide and 50% glycerol pH 7.3.

HepG2 cells were subjected to SDS PAGE followed by western blot with Catalog No:113998(POLD2 antibody) at dilution of 1:1000

## Storage

Store at -20°C. DO NOT ALIQUOT

## Clonality