

PLAA antibody

Catalog Number: 113929

Product name

PLAA antibody

Specificity

Human; other species not tested.

Antibody description

PLAA Rabbit Polyclonal antibody. Positive IP detected in K-562 cells. Positive WB detected in K-562 cells, MCF7 cells. Observed molecular weight by Western-blot: 72-74 kDa

Preparation

This antibody was obtained by immunization of PLAA recombinant protein (Accession Number: NM_001031689). Purification method: Antigen affinity purified.

Formulation

PBS with 0.02% sodium azide and 50% glycerol pH 7.3.

Storage

Store at -20°C. DO NOT ALIQUOT

Clonality

Polyclonal

Ig Type

Rabbit IgG

Applications

ELISA, WB, IP

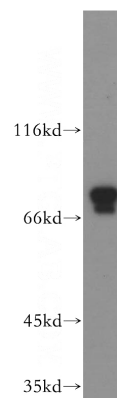
Dilutions

Recommended Dilution:

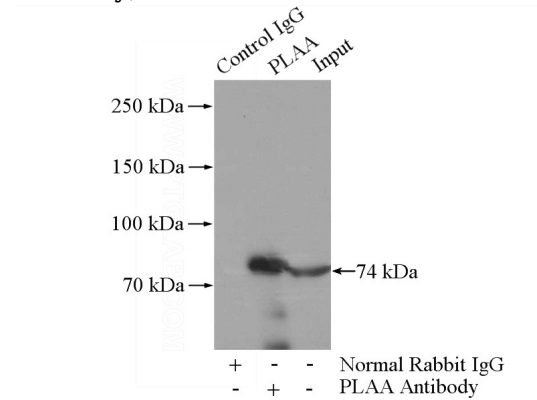
WB: 1:200-1:2000

IP: 1:200-1:2000

Validations



K-562 cells were subjected to SDS PAGE followed by western blot with Catalog No:113929(PLAA antibody) at dilution of 1:500



IP Result of anti-PLAA (IP:Catalog No:113929, 4ug; Detection:Catalog No:113929 1:600) with K-562 cells lysate 3200ug.