

PIGB antibody

Catalog Number: 113891

Product name

PIGB antibody

Specificity

human, mouse, rat; other species not tested.

Antibody description

PIGB Rabbit Polyclonal antibody. Positive IHC detected in human prostate cancer. Positive WB detected in human liver tissue, human brain tissue, mouse testis tissue, Raji cells. Observed molecular weight by Western-blot: 50-55kd

Preparation

This antibody was obtained by immunization of PIGB recombinant protein (Accession Number: NM_004855). Purification method: Antigen affinity purified.

Formulation

PBS with 0.02% sodium azide and 50% glycerol pH 7.3.

Storage

Store at -20°C. DO NOT ALIQUOT

Clonality

Polyclonal

Ig Type

Rabbit IgG

Applications

ELISA, WB, IHC

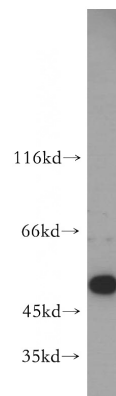
Dilutions

Recommended Dilution:

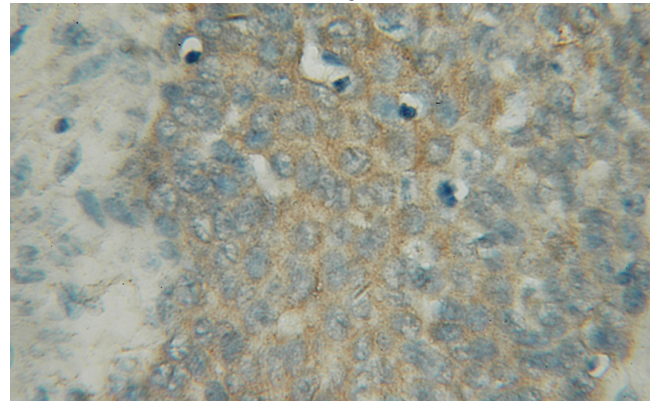
WB: 1:500-1:5000

IHC: 1:20-1:200

Validations



human liver tissue were subjected to SDS PAGE followed by western blot with Catalog No:113891(PIGB antibody) at dilution of 1:800



Immunohistochemical of paraffin-embedded human prostate cancer using Catalog No:113891(PIGB antibody) at dilution of 1:50 (under 10x lens)