

# PKLR antibody



Catalog Number: 113857

## Product name

PKLR antibody

IP: 1:200-1:2000

IHC: 1:20-1:200

## Specificity

Human, Mouse, Rat; other species not tested.

## Antibody description

PKLR Rabbit Polyclonal antibody. Positive WB detected in K-562 cells, mouse kidney tissue, mouse liver tissue, NIH/3T3 cells. Positive IP detected in K-562 cells. Positive IHC detected in human liver tissue. Observed molecular weight by Western-blot: 58 kDa

## Preparation

This antibody was obtained by immunization of PKLR recombinant protein (Accession Number: XM\_047422592). Purification method: Antigen affinity purified.

## Formulation

PBS with 0.02% sodium azide and 50% glycerol pH 7.3.

## Storage

Store at -20°C. DO NOT ALIQUOT

## Clonality

Polyclonal

## Ig Type

Rabbit IgG

## Applications

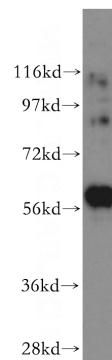
ELISA, WB, IHC, IP

## Dilutions

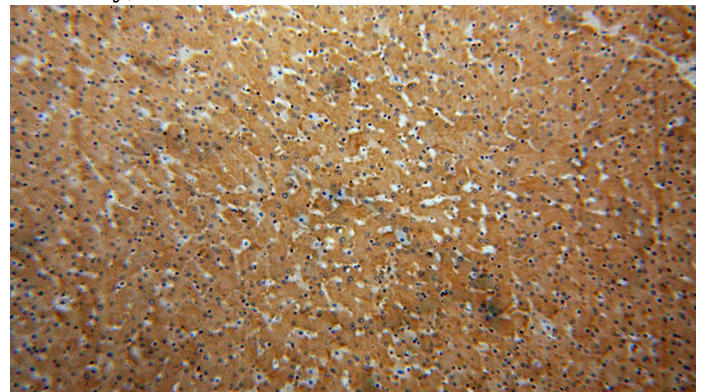
Recommended Dilution:

WB: 1:500-1:5000

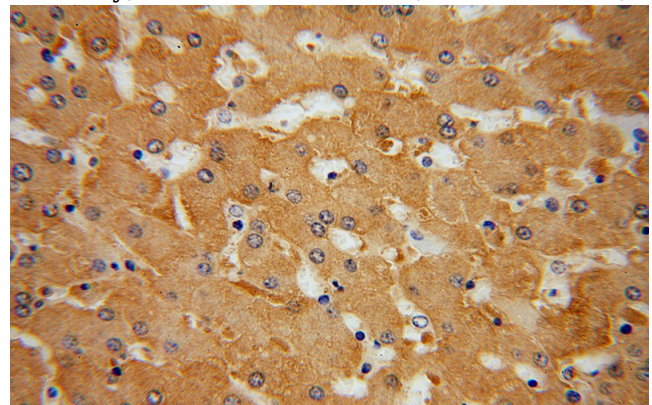
## Validations



K-562 cells were subjected to SDS PAGE followed by western blot with Catalog No:113857(PKLR antibody) at dilution of 1:500



Immunohistochemical of paraffin-embedded human liver using Catalog No:113857(PKLR antibody) at dilution of 1:100 (under 10x lens)



Immunohistochemical of paraffin-embedded human liver using Catalog No:113857(PKLR

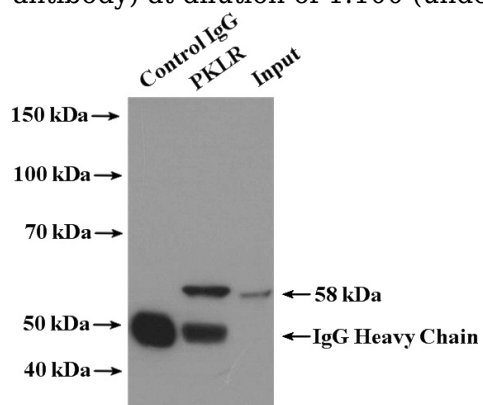
# PKLR antibody



Catalog Number: 113857

---

antibody) at dilution of 1:100 (under 40x lens)



IP Result of anti-PKLR (IP:Catalog No:113857, 4ug; Detection:Catalog No:113857 1:500) with K-562 cells lysate 3200ug.