

PES1 antibody

Catalog Number: 113724

Product name

PES1 antibody

Specificity

human, mouse, rat; other species not tested.

Antibody description

PES1 Rabbit Polyclonal antibody. Positive IHC detected in human gliomas. Positive WB detected in human kidney tissue. Observed molecular weight by Western-blot: 72kd

Preparation

This antibody was obtained by immunization of PES1 recombinant protein (Accession Number: NM_014303). Purification method: Antigen affinity purified.

Formulation

PBS with 0.02% sodium azide and 50% glycerol pH 7.3.

Storage

Store at -20°C. DO NOT ALIQUOT

Clonality

Polyclonal

Ig Type

Rabbit IgG

Applications

ELISA, WB, IHC

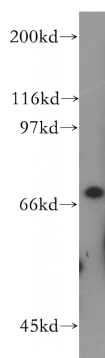
Dilutions

Recommended Dilution:

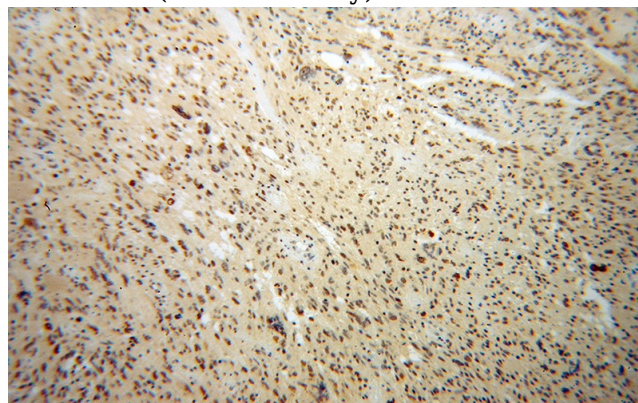
WB: 1:500-1:5000

IHC: 1:20-1:200

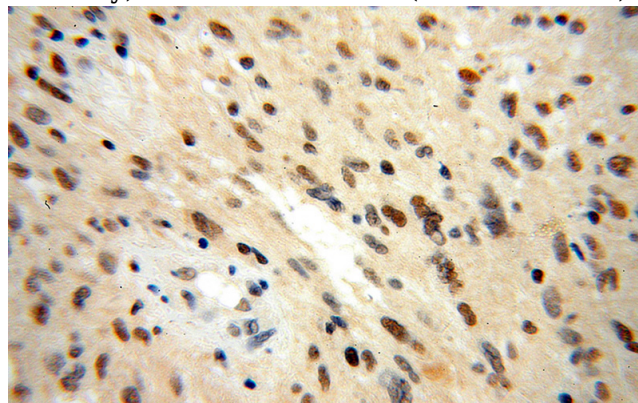
Validations



human kidney tissue were subjected to SDS PAGE followed by western blot with Catalog No:113724(PES1 antibody) at dilution of 1:400



Immunohistochemical of paraffin-embedded human gliomas using Catalog No:113724(PES1 antibody) at dilution of 1:100 (under 10x lens)



Immunohistochemical of paraffin-embedded human gliomas using Catalog No:113724(PES1 antibody) at dilution of 1:100 (under 40x lens)