

# PDCL3 antibody



Catalog Number: 113654

## Product name

PDCL3 antibody

## Specificity

human, mouse; other species not tested.

## Antibody description

PDCL3 Rabbit Polyclonal antibody. Positive IF detected in HepG2. Positive WB detected in A2780 cells, COLO 320 cells, MCF7 cells, mouse testis tissue, PC-3 cells. Observed molecular weight by Western-blot: 35 kDa

## Preparation

This antibody was obtained by immunization of PDCL3 recombinant protein (Accession Number: NM\_024065). Purification method: Antigen affinity purified.

## Formulation

PBS with 0.1% sodium azide and 50% glycerol pH 7.3.

## Storage

Store at -20°C. DO NOT ALIQUOT

## Clonality

Polyclonal

## Ig Type

Rabbit IgG

## Applications

ELISA, WB, IF

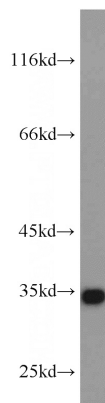
## Dilutions

Recommended Dilution:

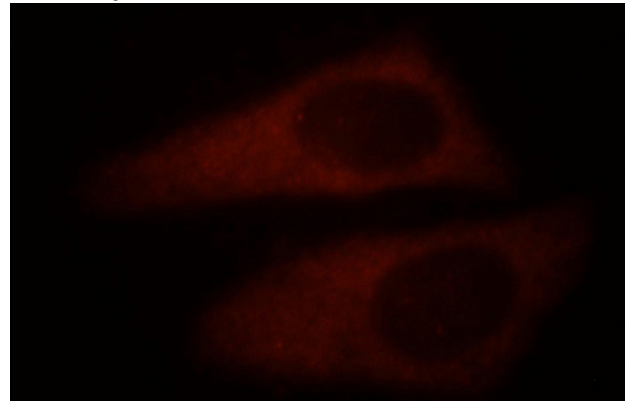
WB: 1:500-1:5000

IF: 1:10-1:100

## Validations



A2780 cells were subjected to SDS PAGE followed by western blot with Catalog No:113654(PDCL3 antibody) at dilution of 1:1000



Immunofluorescent analysis of HepG2 cells, using PDCL3 antibody Catalog No:113654 at 1:25 dilution and Rhodamine-labeled goat anti-rabbit IgG (red).