

# PECR antibody

Catalog Number: 113647

## Product name

PECR antibody

IP: 1:200-1:1000

IHC: 1:20-1:200

## Specificity

Human, Mouse, Rat; other species not tested.

## Antibody description

PECR Rabbit Polyclonal antibody. Positive IHC detected in human liver cancer tissue. Positive IP detected in mouse liver tissue. Positive WB detected in human kidney tissue, human testis tissue, mouse liver tissue. Observed molecular weight by Western-blot: 33 kDa

## Validations



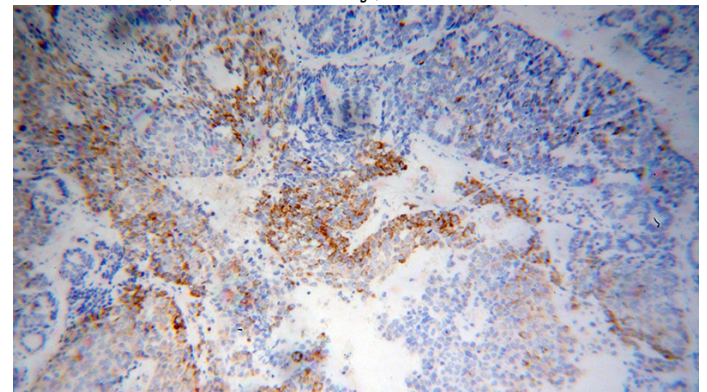
## Preparation

This antibody was obtained by immunization of PECR recombinant protein (Accession Number: NM\_018441). Purification method: Antigen affinity purified.

human kidney tissue were subjected to SDS PAGE followed by western blot with Catalog No:113647(PECR antibody) at dilution of 1:400

## Formulation

PBS with 0.02% sodium azide and 50% glycerol pH 7.3.



## Storage

Store at -20°C. DO NOT ALIQUOT

## Clonality

Polyclonal

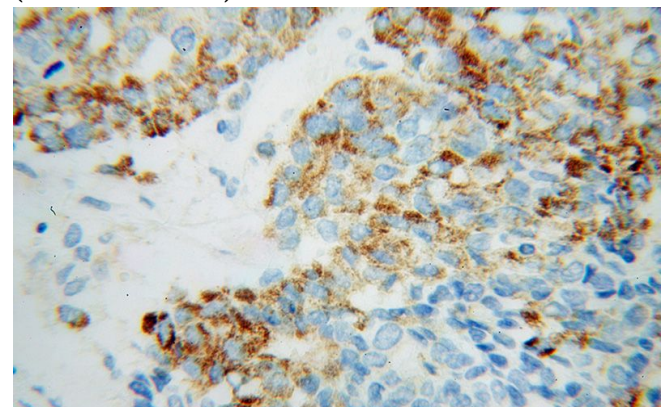
Immunohistochemical of paraffin-embedded human liver cancer using Catalog No:113647(PECR antibody) at dilution of 1:100 (under 10x lens)

## Ig Type

Rabbit IgG

## Applications

ELISA, WB, IHC, IP



## Dilutions

Recommended Dilution:

WB: 1:500-1:5000

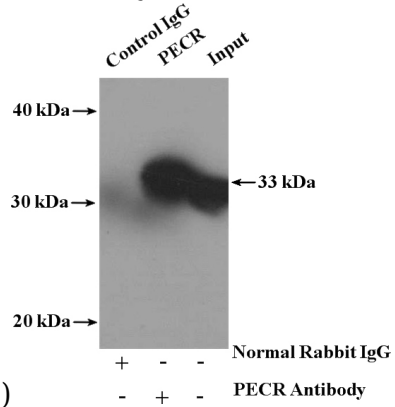
Immunohistochemical of paraffin-embedded

# PECR antibody

Catalog Number: 113647

human liver cancer using Catalog No:113647(PECR antibody) at dilution of 1:100

IP Result of anti-PECR (IP:Catalog No:113647, 4ug; Detection:Catalog No:113647 1:400) with mouse liver tissue lysate 4000ug.



(under 40x lens)