

# PD-L1/CD274 antibody



Catalog Number: 113628

## General Information

### Product name:

PD-L1/CD274 antibody

### Immunogen:

### Applications:

ELISA, WB, IF, IHC, IP

### Specificity:

Human, Mouse, Rat; other species not tested.

### Antibody description:

PD-L1/CD274 Rabbit Polyclonal antibody. Positive WB detected in mouse heart tissue, A549 cells, HeLa cells, HepG2 cells, human heart tissue, K-562 cells, mouse skeletal muscle tissue. Positive IP detected in mouse heart tissue. Positive IF detected in HEK-293 cells. Positive IHC detected in mouse heart tissue, human heart tissue, human stomach cancer tissue. Observed molecular weight by Western-blot: 50-56 kDa, 65-70 kDa

## Properties

### Preparation:

This antibody was obtained by immunization of PD-L1/CD274 recombinant protein (Accession Number: NM\_014143). Purification method: Antigen affinity purified.

### Formulation:

PBS with 0.02% sodium azide and 50% glycerol pH 7.3.

### Storage:

Store at -20°C. DO NOT ALIQUOT

### Clonality:

Polyclonal

**Ig Type:** Rabbit IgG

## Applications

Recommended Dilution:

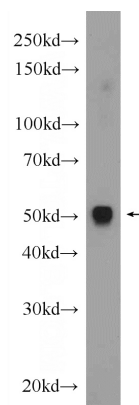
WB: 1:200-1:1000

IP: 1:500-1:5000

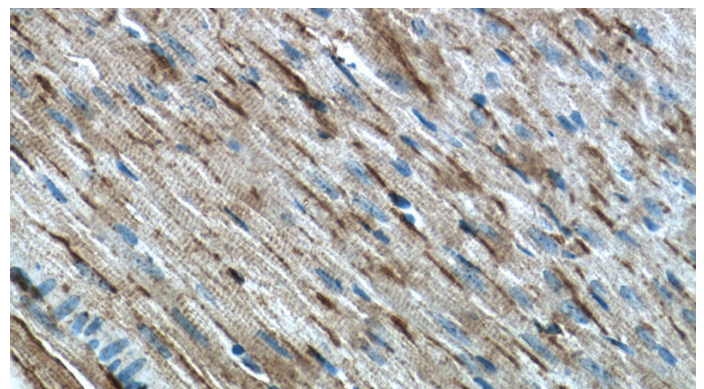
IHC: 1:20-1:200

IF: 1:10-1:100

## Validations



mouse heart tissue were subjected to SDS PAGE followed by western blot with Catalog No:113628(PD-L1/CD274 Antibody) at dilution of 1:300

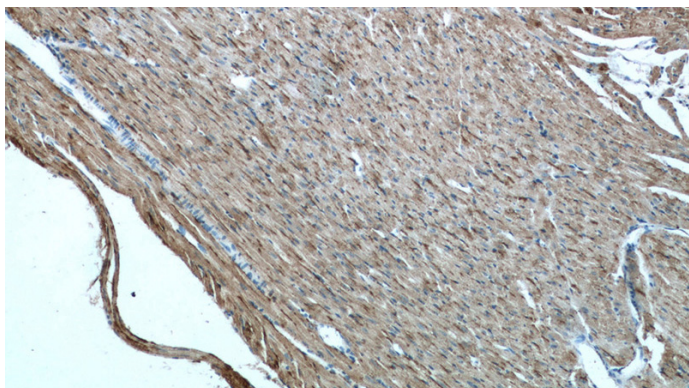


Immunohistochemistry of paraffin-embedded mouse heart tissue slide using Catalog No:113628(PD-L1/CD274 Antibody) at dilution of

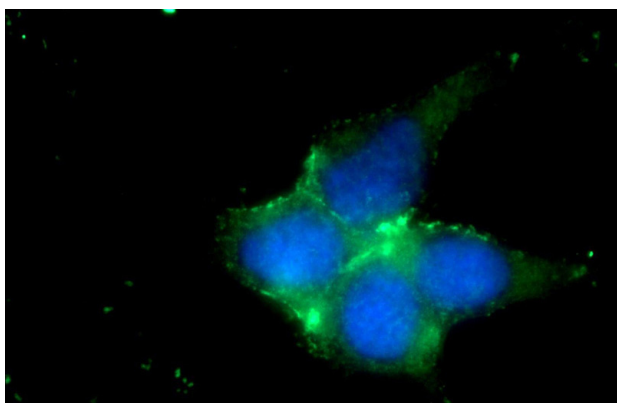
# PD-L1/CD274 antibody

Catalog Number: 113628

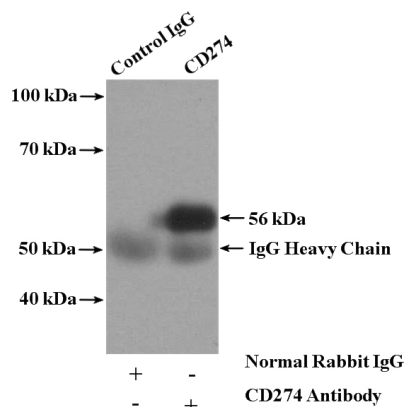
1:50 (under 40x lens)



Immunohistochemistry of paraffin-embedded mouse heart tissue slide using Catalog No:113628(PD-L1/CD274 Antibody) at dilution of 1:50 (under 10x lens)



Immunofluorescent analysis of HEK-293 cells using Catalog No:113628(PD-L1/CD274 Antibody) at dilution of 1:25 and Alexa Fluor 488-conjugated AffiniPure Goat Anti-Rabbit IgG(H+L)



IP Result of anti-PD-L1/CD274 (IP:Catalog No:113628, 4ug; Detection:Catalog No:113628 1:1000) with mouse heart tissue lysate 4000ug.