

PAWR antibody

Catalog Number: 113603

Product name

PAWR antibody

Specificity

Human, Mouse, Rat; other species not tested.

Antibody description

PAWR Rabbit Polyclonal antibody. Positive WB detected in mouse heart tissue, mouse kidney tissue. Positive IHC detected in human breast cancer tissue, human kidney tissue. Observed molecular weight by Western-blot: 45kd

Preparation

This antibody was obtained by immunization of Peptide (Accession Number: NM_002583). Purification method: Antigen affinity purified.

Formulation

PBS with 0.02% sodium azide and 50% glycerol pH 7.3.

Storage

Store at -20°C. DO NOT ALIQUOT

Clonality

Polyclonal

Ig Type

Rabbit IgG

Applications

ELISA, WB, IHC

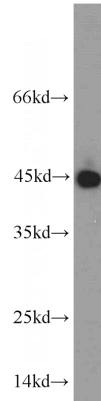
Dilutions

Recommended Dilution:

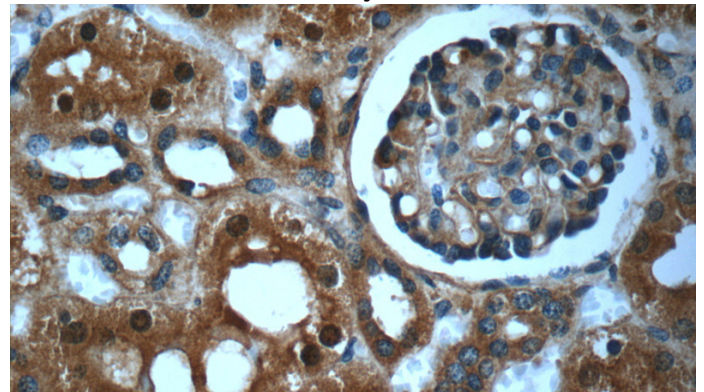
WB: 1:200-1:2000

IHC: 1:20-1:200

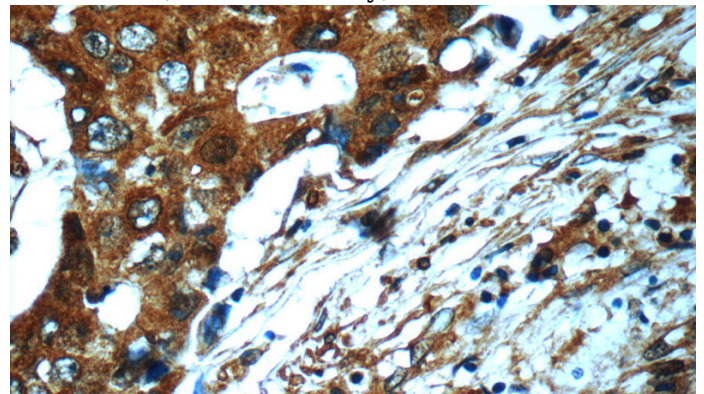
Validations



mouse heart tissue were subjected to SDS PAGE followed by western blot with Catalog No:113603(PAWR antibody) at dilution of 1:400



Immunohistochemistry of paraffin-embedded human kidney slide using Catalog No:113603(PAWR Antibody) at dilution of 1:50



Immunohistochemistry of paraffin-embedded human breast cancer slide using Catalog No:113603(PAWR Antibody) at dilution of 1:50