

# PARVA antibody



Catalog Number: 113597

## Product name

PARVA antibody

## Specificity

human, mouse, rat; other species not tested.

## Antibody description

PARVA Rabbit Polyclonal antibody. Positive IHC detected in human prostate cancer. Positive WB detected in human liver tissue, human kidney tissue, Jurkat cells. Observed molecular weight by Western-blot: 42kd

## Preparation

This antibody was obtained by immunization of PARVA recombinant protein (Accession Number: NM\_018222). Purification method: Antigen affinity purified.

## Formulation

PBS with 0.1% sodium azide and 50% glycerol pH 7.3.

## Storage

Store at -20°C. DO NOT ALIQUOT

## Clonality

Polyclonal

## Ig Type

Rabbit IgG

## Applications

ELISA, WB, IHC

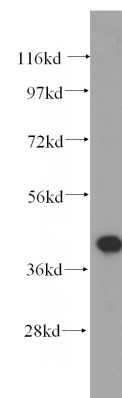
## Dilutions

Recommended Dilution:

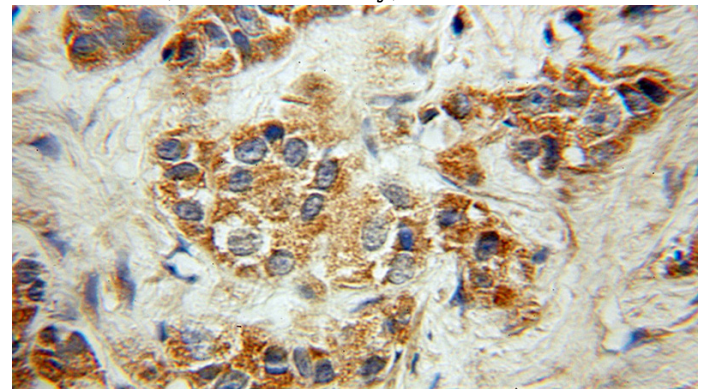
WB: 1:200-1:2000

IHC: 1:20-1:200

## Validations



human liver tissue were subjected to SDS PAGE followed by western blot with Catalog No:113597(PARVA antibody) at dilution of 1:500



Immunohistochemical of paraffin-embedded human prostate cancer using Catalog No:113597(PARVA antibody) at dilution of 1:50 (under 10x lens)