

# PARP3 antibody

Catalog Number: 113594

## Product name

PARP3 antibody

IHC: 1:20-1:200

IF: 1:10-1:100

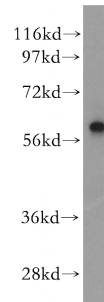
## Specificity

human, mouse, rat; other species not tested.

## Validations

## Antibody description

PARP3 Rabbit Polyclonal antibody. Positive WB detected in human kidney tissue, A549 cells, human heart tissue. Positive IF detected in Hela. Positive IHC detected in human pancreas cancer. Observed molecular weight by Western-blot: 60kd



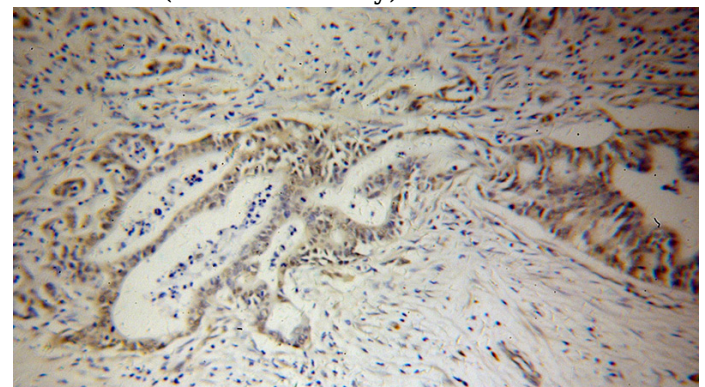
## Preparation

This antibody was obtained by immunization of PARP3 recombinant protein (Accession Number: XM\_047447087). Purification method: Antigen affinity purified.

human kidney tissue were subjected to SDS PAGE followed by western blot with Catalog No:113594(PARP3 antibody) at dilution of 1:500

## Formulation

PBS with 0.1% sodium azide and 50% glycerol pH 7.3.



## Storage

Store at -20°C. DO NOT ALIQUOT

## Clonality

Polyclonal

Immunohistochemical of paraffin-embedded human pancreas cancer using Catalog No:113594(PARP3 antibody) at dilution of 1:50 (under 10x lens)

## Ig Type

Rabbit IgG

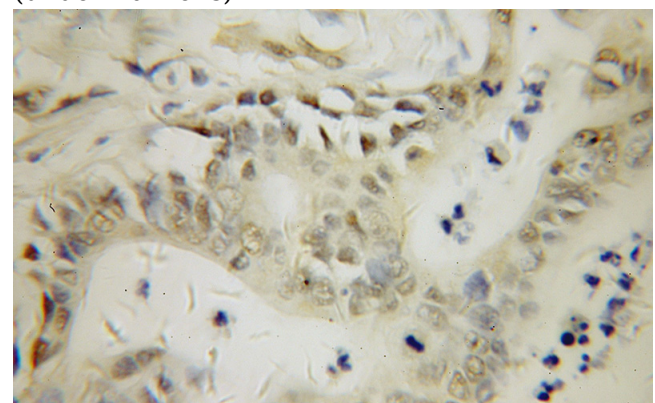
## Applications

ELISA, WB, IHC, IF

## Dilutions

Recommended Dilution:

WB: 1:200-1:2000



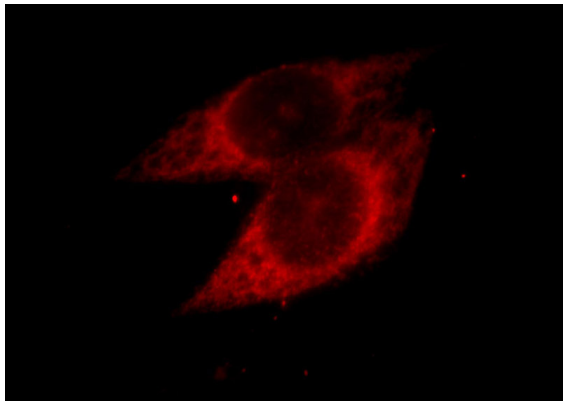
Immunohistochemical of paraffin-embedded

# PARP3 antibody

Catalog Number: 113594

---

human pancreas cancer using Catalog No:113594(PARP3 antibody) at dilution of 1:50 (under 40x lens)



Immunofluorescent analysis of Hela cells, using PARP3 antibody Catalog No:113594 at 1:25 dilution and Rhodamine-labeled goat anti-rabbit IgG (red).