

PARP1 antibody



Catalog Number: 113587

Product name

PARP1 antibody

Immunogen

[Human PARP1 Recombinant protein \(His tag\)](#)

Specificity

Human, Mouse; other species not tested.

Antibody description

PARP1 Rabbit Polyclonal antibody. Positive WB detected in K-562 cells, human skeletal muscle tissue, Jurkat cells, NIH/3T3 cells, Raji cells. Positive IP detected in K-562 cells. Observed molecular weight by Western-blot: 113-116 kDa

Preparation

This antibody was obtained by immunization of PARP1 recombinant protein (Accession Number: NM_001618). Purification method: Antigen Affinity purified.

Formulation

PBS with 0.02% sodium azide and 50% glycerol pH 7.3.

Storage

Store at -20°C. DO NOT ALIQUOT

Clonality

Polyclonal

Ig Type

Rabbit IgG

Applications

ELISA, WB, IP

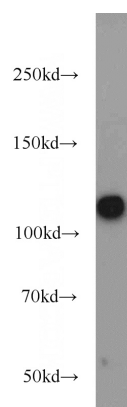
Dilutions

Recommended Dilution:

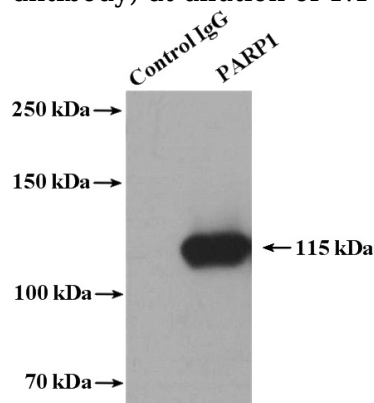
WB: 1:500-1:5000

IP: 1:500-1:5000

Validations



K-562 cells were subjected to SDS PAGE followed by western blot with Catalog No:113587(PARP1 antibody) at dilution of 1:1000



IP Result of anti-PARP1 (IP:Catalog No:113587, 4ug; Detection:Catalog No:113587 1:1000) with K-562 cells lysate 3200ug.