

# P2RY13 antibody

Catalog Number: 113546

## Product name

P2RY13 antibody

## Specificity

Human, Mouse; other species not tested.

## Antibody description

P2RY13 Rabbit Polyclonal antibody. Positive WB detected in HeLa cells, HepG2 cells. Positive FC detected in HeLa cells. Positive IHC detected in human small intestine tissue, mouse brain tissue. Observed molecular weight by Western-blot: 45 kDa

## Preparation

This antibody was obtained by immunization of P2RY13 recombinant protein (Accession Number: NM\_023914). Purification method: Antigen affinity purified.

## Formulation

PBS with 0.1% sodium azide and 50% glycerol pH 7.3.

## Storage

Store at -20°C. DO NOT ALIQUOT

## Clonality

Polyclonal

## Ig Type

Rabbit IgG

## Applications

ELISA, WB, IHC, FC

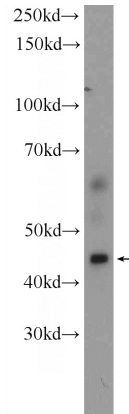
## Dilutions

Recommended Dilution:

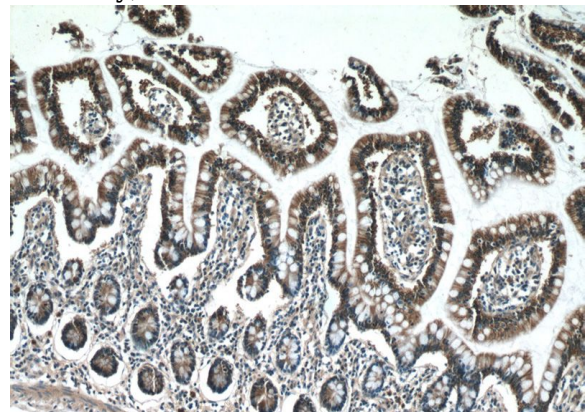
WB: 1:200-1:1000

IHC: 1:20-1:200

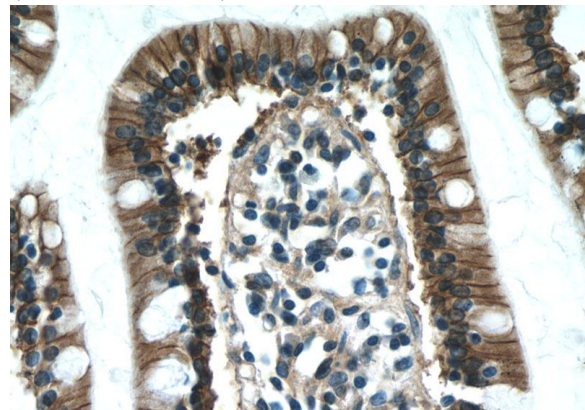
## Validations



HeLa cells were subjected to SDS PAGE followed by western blot with Catalog No:113546(P2RY13 Antibody) at dilution of 1:300



Immunohistochemistry of paraffin-embedded human small intestine tissue slide using Catalog No:113546(P2RY13 Antibody) at dilution of 1:50 (under 10x lens)



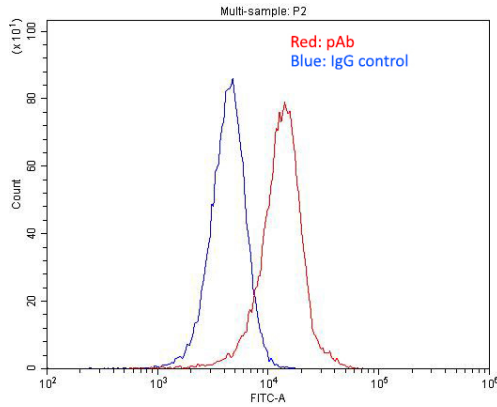
Immunohistochemistry of paraffin-embedded human small intestine tissue slide using Catalog

# P2RY13 antibody



Catalog Number: 113546

No:113546(P2RY13 Antibody) at dilution of 1:50  
(under 40x lens)



1X10<sup>6</sup> HeLa cells were stained with .2ug P2RY13 antibody (Catalog No:113546, red) and control antibody (blue). Fixed with 4% PFA blocked with 3% BSA (30 min). Alexa Fluor 488-conjugated AffiniPure Goat Anti-Rabbit IgG(H+L) with dilution 1:1500.