

# PADI2 antibody

Catalog Number: 113482

## Product name

PADI2 antibody

## Specificity

Human, Mouse, Rat; other species not tested.

## Antibody description

PADI2 Rabbit Polyclonal antibody. Positive WB detected in BxPC-3 cells, mouse brain tissue, rat brain tissue. Positive IP detected in mouse brain tissue. Positive IF detected in BxPC-3 cells, HeLa cells. Positive IHC detected in human gliomas tissue, human breast cancer tissue, human kidney tissue. Observed molecular weight by Western-blot: 49 kDa; 70-75 kDa

## Preparation

This antibody was obtained by immunization of PADI2 recombinant protein (Accession Number: BC009701). Purification method: Antigen affinity purified.

## Formulation

PBS with 0.1% sodium azide and 50% glycerol pH 7.3.

## Storage

Store at -20°C. DO NOT ALIQUOT

## Clonality

Polyclonal

## Ig Type

Rabbit IgG

## Applications

ELISA, WB, IHC, IF, IP

## Dilutions

Recommended Dilution:

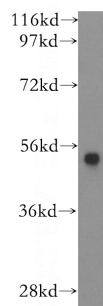
WB: 1:500-1:5000

IP: 1:200-1:1000

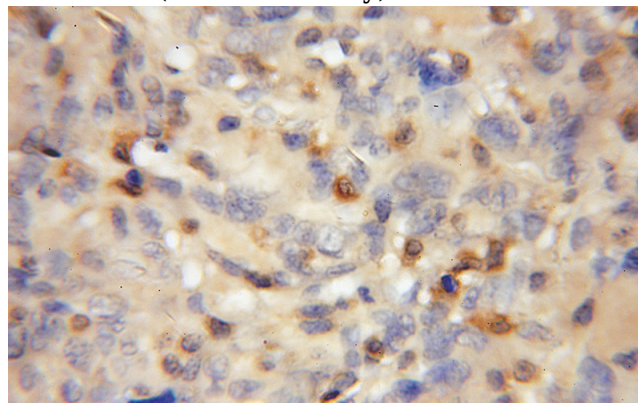
IHC: 1:20-1:200

IF: 1:10-1:100

## Validations



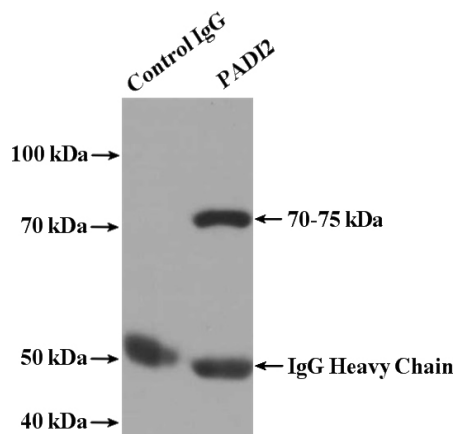
BxPC-3 cells were subjected to SDS PAGE followed by western blot with Catalog No:113482(PADI2 antibody) at dilution of 1:300



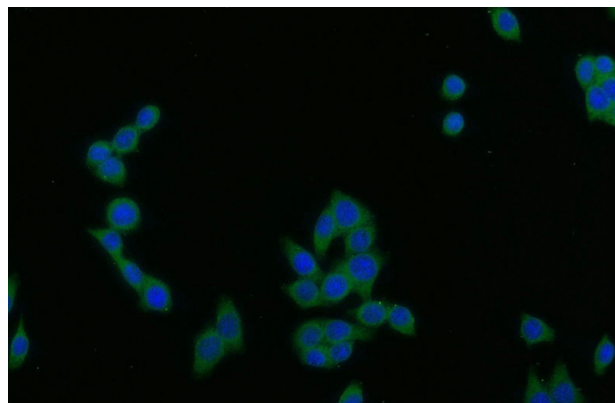
Immunohistochemical of paraffin-embedded human gliomas using Catalog No:113482(PADI2 antibody) at dilution of 1:50 (under 10x lens)

# PADI2 antibody

Catalog Number: 113482



IP Result of anti-PADI2 (IP:Catalog No:113482, 3ug; Detection:Catalog No:113482 1:300) with mouse brain tissue lysate 3600ug.



Immunofluorescent analysis of BxPC-3 cells using Catalog No:113482(PADI2 Antibody) at dilution of 1:25 and Alexa Fluor 488-conjugated AffiniPure Goat Anti-Rabbit IgG(H+L)