

OSBPL2 antibody



Catalog Number: 113432

Product name

OSBPL2 antibody

IP: 1:200-1:2000

IHC: 1:20-1:200

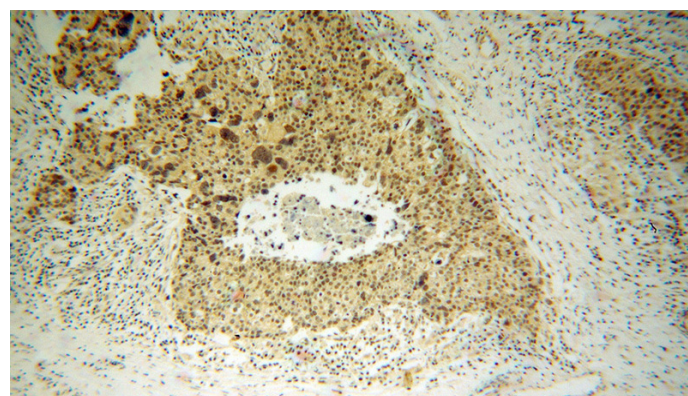
Specificity

Human; other species not tested.

Validations

Antibody description

OSBPL2 Rabbit Polyclonal antibody. Positive IP detected in HeLa cells. Positive WB detected in A549 cells, HeLa cells, human heart tissue. Positive IHC detected in human ovary tumor tissue. Observed molecular weight by Western-blot: 56 kDa



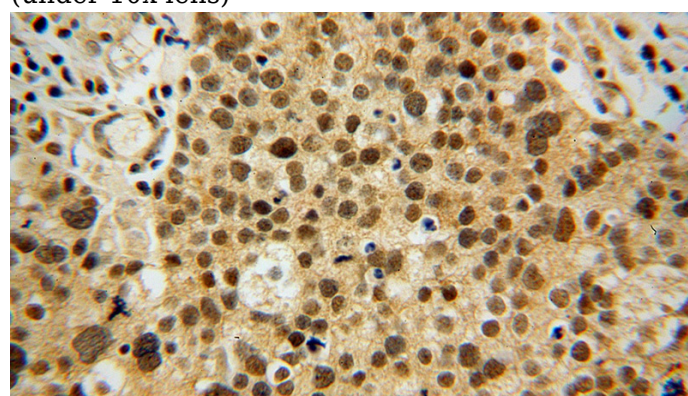
Preparation

This antibody was obtained by immunization of OSBPL2 recombinant protein (Accession Number: XM_017028165). Purification method: Antigen affinity purified.

Immunohistochemical of paraffin-embedded human ovary tumor using Catalog No:113432(OSBPL2 antibody) at dilution of 1:100 (under 10x lens)

Formulation

PBS with 0.02% sodium azide and 50% glycerol pH 7.3.



Storage

Store at -20°C. DO NOT ALIQUOT

Clonality

Polyclonal

Immunohistochemical of paraffin-embedded human ovary tumor using Catalog No:113432(OSBPL2 antibody) at dilution of 1:100

Ig Type

Rabbit IgG

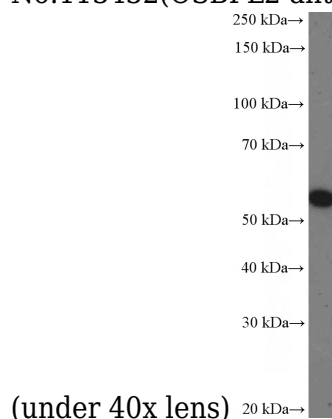
Applications

ELISA, IHC, IP, WB

Dilutions

Recommended Dilution:

WB: 1:500-1:5000



(under 40x lens)

A549 cells were subjected to SDS PAGE followed

OSBPL2 antibody

Catalog Number: 113432

by western blot with Catalog No:113432(OSBPL2 Antibody) at dilution of 1:1000

IP Result of anti-OSBPL2 (IP:Catalog No:113432, 4ug; Detection:Catalog No:113432 1:500) with HeLa cells lysate 880ug.

