

ORAI2 antibody

Catalog Number: 113417

Product name

ORAI2 antibody

IHC: 1:20-1:200

IF: 1:10-1:100

Specificity

Human, Mouse; other species not tested.

Antibody description

ORAI2 Rabbit Polyclonal antibody. Positive IHC detected in human kidney tissue. Positive IF detected in HEK-293 cells. Positive FC detected in HEK-293 cells. Positive WB detected in MCF-7 cells, mouse heart tissue. Observed molecular weight by Western-blot: 36 kDa

Preparation

This antibody was obtained by immunization of ORAI2 recombinant protein (Accession Number: NM_032831). Purification method: Antigen Affinity purified.

Formulation

PBS with 0.02% sodium azide and 50% glycerol pH 7.3.

Storage

Store at -20°C. DO NOT ALIQUOT

Clonality

Polyclonal

Ig Type

Rabbit IgG

Applications

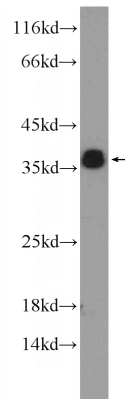
ELISA, WB, IHC, IF, FC

Dilutions

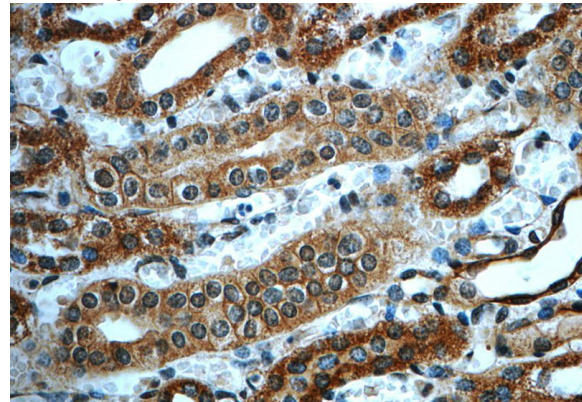
Recommended Dilution:

WB: 1:200-1:2000

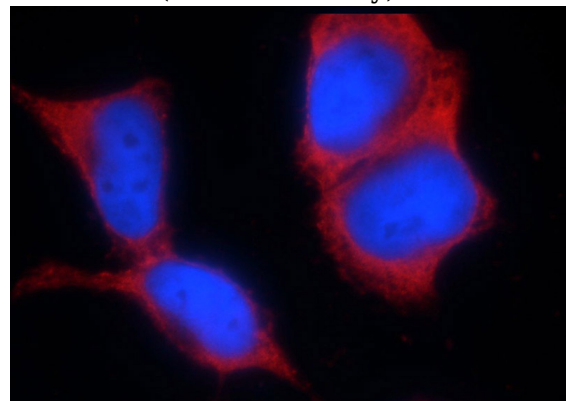
Validations



MCF-7 cells were subjected to SDS PAGE followed by western blot with Catalog No:113417(ORAI2 Antibody) at dilution of 1:600



Immunohistochemistry of paraffin-embedded human kidney slide using Catalog No:113417(ORAI2 Antibody) at dilution of 1:50



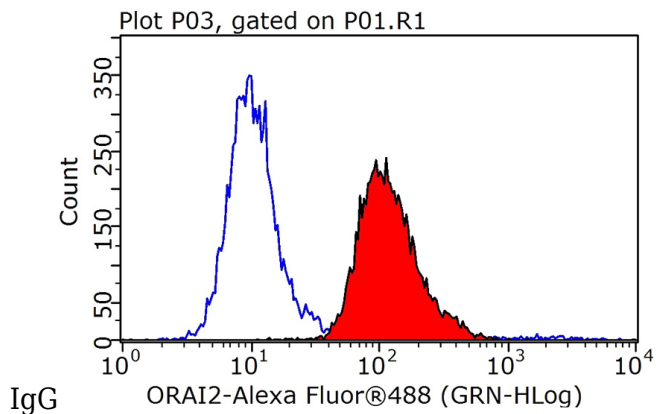
Immunofluorescent analysis of HEK-293 cells using Catalog No:113417(ORAI2 Antibody) at

ORAI2 antibody



Catalog Number: 113417

dilution of 1:25 and Rhodamine-Goat anti-Rabbit



1X10⁶ HEK-293 cells were stained with 0.2ug ORAI2 antibody (Catalog No:113417, red) and control antibody (blue). Fixed with 90% MeOH blocked with 3% BSA (30 min). Alexa Fluor 488-conjugated AffiniPure Goat Anti-Rabbit IgG(H+L) with dilution 1:1000.