

# OPRL1 antibody



Catalog Number: 113413

## Product name

OPRL1 antibody

IP: 1:200-1:2000

IHC: 1:20-1:200

## Specificity

Human, Mouse, Rat; other species not tested.

## Antibody description

OPRL1 Rabbit Polyclonal antibody. Positive IHC detected in human gliomas tissue. Positive WB detected in HeLa cells, SH-SY5Y cells. Positive IP detected in SH-SY5Y cells. Observed molecular weight by Western-blot: 45kd

## Preparation

This antibody was obtained by immunization of OPRL1 recombinant protein (Accession Number: NM\_000913). Purification method: Antigen affinity purified.

## Formulation

PBS with 0.02% sodium azide and 50% glycerol pH 7.3.

## Storage

Store at -20°C. DO NOT ALIQUOT

## Clonality

Polyclonal

## Ig Type

Rabbit IgG

## Applications

ELISA, WB, IHC, IP

## Dilutions

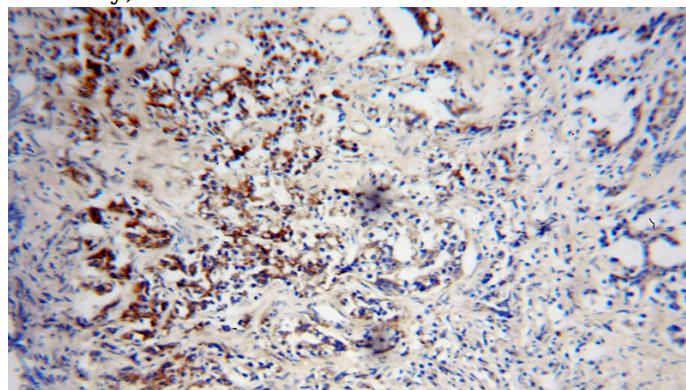
Recommended Dilution:

WB: 1:500-1:5000

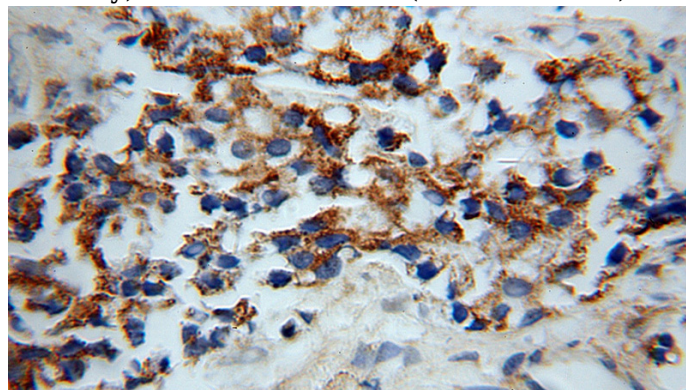
## Validations



HeLa cells were subjected to SDS PAGE followed by western blot with Catalog No:113413(OPRL1 antibody) at dilution of 1:500



Immunohistochemical of paraffin-embedded human gliomas using Catalog No:113413(OPRL1 antibody) at dilution of 1:100 (under 10x lens)

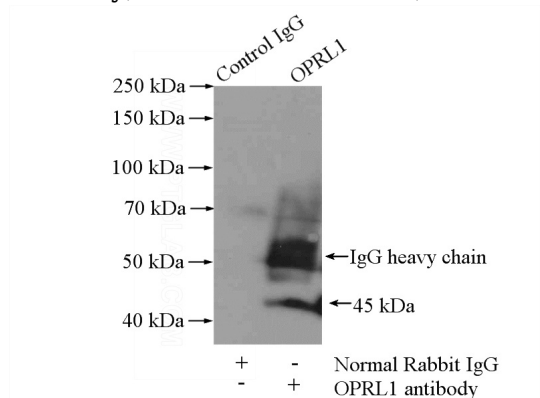


Immunohistochemical of paraffin-embedded human gliomas using Catalog No:113413(OPRL1 antibody) at dilution of 1:100 (under 10x lens)

# OPRL1 antibody

Catalog Number: 113413

antibody) at dilution of 1:100 (under 40x lens)



IP Result of anti-OPRL1 (IP:Catalog No:113413, 4ug; Detection:Catalog No:113413 1:500) with SH-SY5Y cells lysate 2000ug.