

# NUDCD2 antibody



Catalog Number: 113412

## Product name

NUDCD2 antibody

Recommended Dilution:

WB: 1:500-1:5000

## Specificity

Human, Mouse, Rat; other species not tested.

IP: 1:200-1:2000

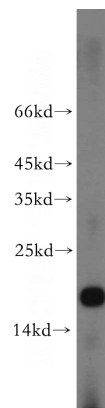
IHC: 1:20-1:200

## Antibody description

NUDCD2 Rabbit Polyclonal antibody. Positive WB detected in human brain tissue, HEK-293 cells, HepG2 cells, human kidney tissue. Positive IP detected in HepG2 cells. Positive IF detected in HepG2 cells, Hela cells. Positive IHC detected in human kidney tissue, human breast cancer tissue. Observed molecular weight by Western-blot: 18 kDa

IF: 1:10-1:100

## Validations



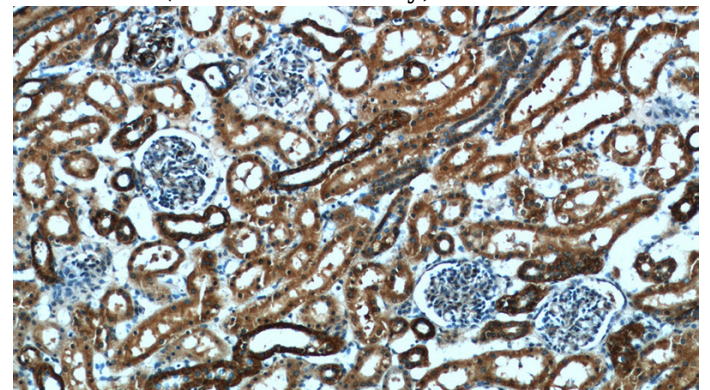
## Preparation

This antibody was obtained by immunization of NUDCD2 recombinant protein (Accession Number: NM\_145266). Purification method: Antigen affinity purified.

human brain tissue were subjected to SDS PAGE followed by western blot with Catalog No:113412(NUDCD2 antibody) at dilution of 1:500

## Formulation

PBS with 0.02% sodium azide and 50% glycerol pH 7.3.



## Storage

Store at -20°C. DO NOT ALIQUOT

## Clonality

Polyclonal

## Ig Type

Rabbit IgG

Immunohistochemical of paraffin-embedded human kidney using Catalog No:113412(NUDCD2 antibody) at dilution of 1:100 (under 10x lens)

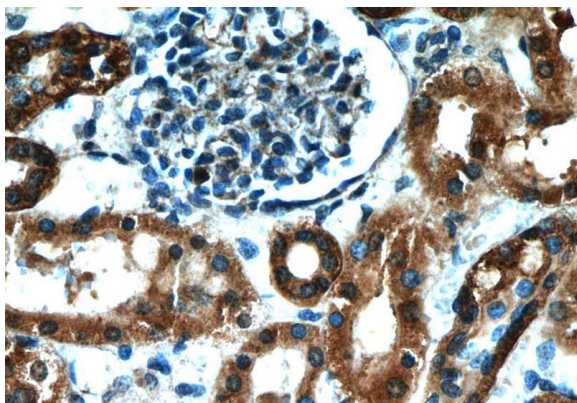
## Applications

ELISA, WB, IHC, IF, IP

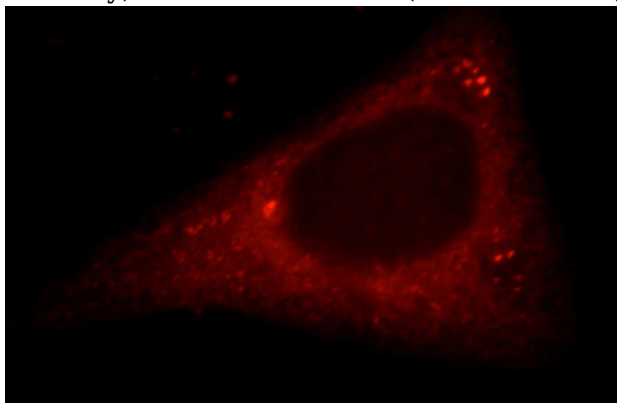
## Dilutions

# NUDCD2 antibody

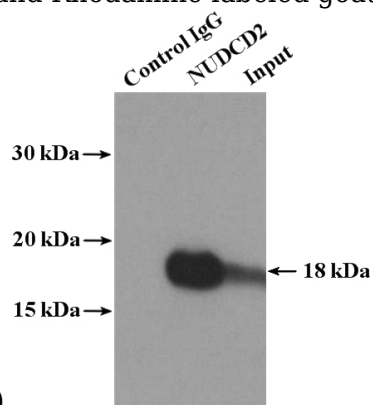
Catalog Number: 113412



Immunohistochemical of paraffin-embedded human kidney using Catalog No:113412(NUDCD2 antibody) at dilution of 1:100 (under 40x lens)



Immunofluorescent analysis of HepG2 cells, using NUDCD2 antibody Catalog No:113412 at 1:25 dilution and Rhodamine-labeled goat anti-rabbit



IgG (red).

IP Result of anti-NUDCD2 (IP:Catalog No:113412, 4ug; Detection:Catalog No:113412 1:600) with HepG2 cells lysate 3480ug.