

# NUDC antibody

Catalog Number: 113411

## Product name

NUDC antibody

Recommended Dilution:

WB: 1:500-1:5000

## Specificity

Human; other species not tested.

IP: 1:500-1:5000

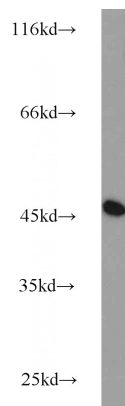
IHC: 1:20-1:200

## Antibody description

NUDC Rabbit Polyclonal antibody. Positive IHC detected in human pancreas cancer tissue. Positive IF detected in HeLa cells, HEK-293 cells, HepG2 cells. Positive WB detected in HepG2 cells, HEK-293 cells, HeLa cells, K-562 cells, SH-SY5Y cells. Positive IP detected in HEK-293 cells. Observed molecular weight by Western-blot: 42-45 kDa

IF: 1:10-1:100

## Validations



HepG2 cells were subjected to SDS PAGE followed by western blot with Catalog No:113411(NUDC antibody) at dilution of 1:1000

## Preparation

This antibody was obtained by immunization of NUDC recombinant protein (Accession Number: NM\_006600). Purification method: Antigen affinity purified.

## Formulation

PBS with 0.1% sodium azide and 50% glycerol pH 7.3.

## Storage

Store at -20°C. DO NOT ALIQUOT

## Clonality

Polyclonal

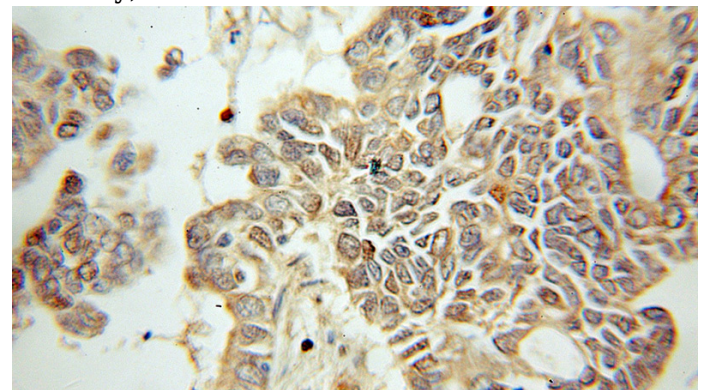
## Ig Type

Rabbit IgG

## Applications

ELISA, WB, IHC, IF, IP

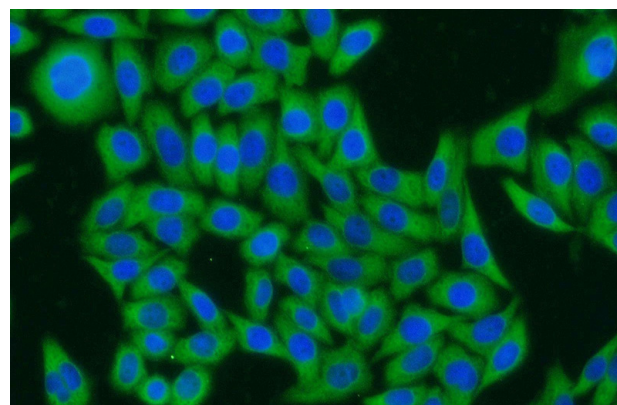
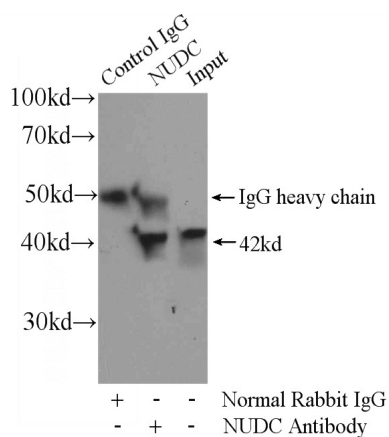
## Dilutions



Immunohistochemical of paraffin-embedded human pancreas cancer using Catalog No:113411(NUDC antibody) at dilution of 1:50 (under 10x lens)

# NUDC antibody

Catalog Number: 113411



Immunofluorescent analysis of HeLa cells using Catalog No:113411(NUDC Antibody) at dilution of 1:25 and Alexa Fluor 594-conjugated AffiniPure Goat Anti-Rabbit IgG(H+L)

IP Result of anti-NUDC (IP:Catalog No:113411, 4ug; Detection:Catalog No:113411 1:1000) with HEK-293 cells lysate 2800ug.