

# nucleobindin 1 antibody



Catalog Number: 113408

## Product name

nucleobindin 1 antibody

IP: 1:500-1:5000

IF: 1:20-1:200

## Specificity

Human, Mouse, Rat; other species not tested.

## Antibody description

nucleobindin 1 Rabbit Polyclonal antibody. Positive IF detected in HepG2 cells. Positive FC detected in HepG2 cells. Positive IP detected in HepG2 cells. Positive WB detected in MCF7 cells, A431 cells, HeLa cells, HepG2 cells. Observed molecular weight by Western-blot: 63 kDa

## Preparation

This antibody was obtained by immunization of nucleobindin 1 recombinant protein (Accession Number: NM\_006184). Purification method: Antigen affinity purified.

## Formulation

PBS with 0.1% sodium azide and 50% glycerol pH 7.3.

## Storage

Store at -20°C. DO NOT ALIQUOT

## Clonality

Polyclonal

## Ig Type

Rabbit IgG

## Applications

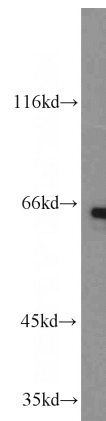
ELISA, WB, IF, FC, IP

## Dilutions

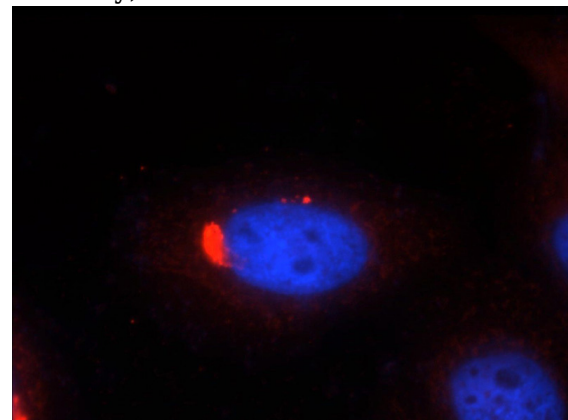
Recommended Dilution:

WB: 1:200-1:2000

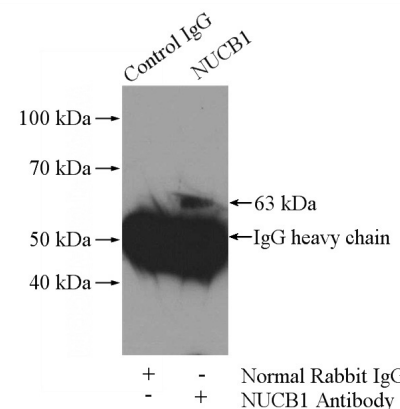
## Validations



MCF7 cells were subjected to SDS PAGE followed by western blot with Catalog No:113408(NUCB1 antibody) at dilution of 1:1000



Immunofluorescent analysis of HepG2 cells, using NUCB1 antibody Catalog No:113408 at 1:50 dilution and Rhodamine-labeled goat anti-rabbit IgG (red). Blue pseudocolor = DAPI (fluorescent



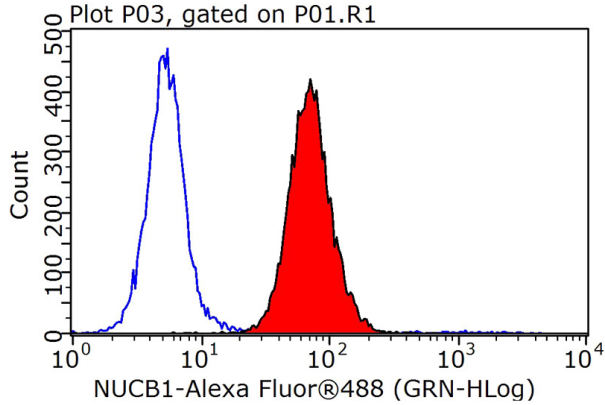
DNA dye).

# nucleobindin 1 antibody



Catalog Number: 113408

IP Result of anti-NUCB1 (IP:Catalog No:113408, 4ug; Detection:Catalog No:113408 1:1000) with HepG2 cells lysate 2400ug.



1X10<sup>6</sup> HepG2 cells were stained with 0.2ug NUCB1 antibody (Catalog No:113408, red) and control antibody (blue). Fixed with 90% MeOH blocked with 3% BSA (30 min). Alexa Fluor 488-conjugated AffiniPure Goat Anti-Rabbit IgG(H+L) with dilution 1:1000.