

NUCKS1 antibody

Catalog Number: 113406

Product name

NUCKS1 antibody

IP: 1:200-1:2000

IHC: 1:20-1:200

Specificity

Human, Mouse, Rat; other species not tested.

Antibody description

NUCKS1 Rabbit Polyclonal antibody. Positive IHC detected in human gliomas tissue. Positive WB detected in SGC-7901 cells, HEK-293 cells, L02 cells, MCF-7 cells. Positive IP detected in HEK-293 cells. Observed molecular weight by Western-blot: 45 kDa

Preparation

This antibody was obtained by immunization of NUCKS1 recombinant protein (Accession Number: NM_022731). Purification method: Antigen affinity purified.

Formulation

PBS with 0.1% sodium azide and 50% glycerol pH 7.3.

Storage

Store at -20°C. DO NOT ALIQUOT

Clonality

Polyclonal

Ig Type

Rabbit IgG

Applications

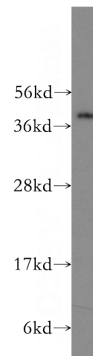
ELISA, WB, IHC, IP

Dilutions

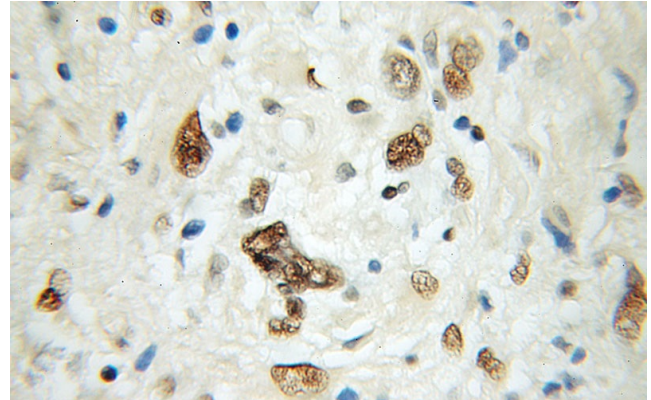
Recommended Dilution:

WB: 1:200-1:2000

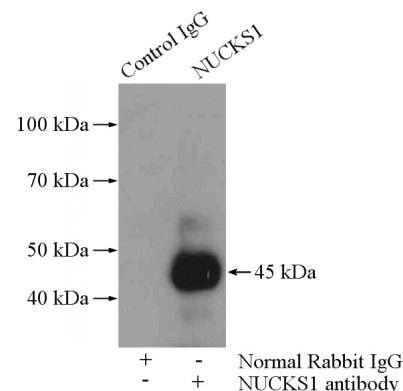
Validations



SGC-7901 cells were subjected to SDS PAGE followed by western blot with Catalog No:113406(NUCKS1 antibody) at dilution of 1:400



Immunohistochemical of paraffin-embedded human gliomas using Catalog No:113406(NUCKS1 antibody) at dilution of 1:50 (under 40x lens)



IP Result of anti-NUCKS1 (IP:Catalog No:113406,

NUCKS1 antibody



Catalog Number: 113406

4ug; Detection:Catalog No:113406 1:500) with HEK-293 cells lysate 2800ug.