

# NUBP2 antibody



Catalog Number: 113404

## Product name

NUBP2 antibody

## Immunogen

[Human NUBP2 Recombinant protein \(GST tag\)](#)

## Specificity

human, mouse, rat; other species not tested.

## Antibody description

NUBP2 Rabbit Polyclonal antibody. Positive IHC detected in human skeletal muscle. Positive WB detected in L02 cells, HepG2 cells, mouse pancreas tissue, NIH/3T3 cells. Observed molecular weight by Western-blot: 30-33kd

## Preparation

This antibody was obtained by immunization of NUBP2 recombinant protein (Accession Number: NM\_012225). Purification method: Antigen affinity purified.

## Formulation

PBS with 0.02% sodium azide and 50% glycerol pH 7.3.

## Storage

Store at -20°C. DO NOT ALIQUOT

## Clonality

Polyclonal

## Ig Type

Rabbit IgG

## Applications

ELISA, WB, IHC

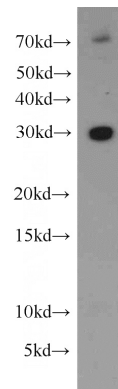
## Dilutions

Recommended Dilution:

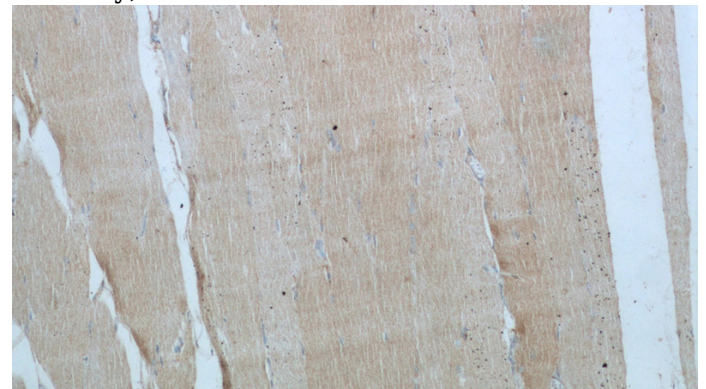
WB: 1:500-1:5000

IHC: 1:20-1:200

## Validations



L02 cells were subjected to SDS PAGE followed by western blot with Catalog No:113404(NUBP2 antibody) at dilution of 1:500



Immunohistochemical of paraffin-embedded human skeletal muscle using Catalog No:113404(NUBP2 antibody) at dilution of 1:50 (under 10x lens)



# NUBP2 antibody



Catalog Number: 113404

---

Immunohistochemical of paraffin-embedded human skeletal muscle using Catalog

No:113404(NUBP2 antibody) at dilution of 1:50 (under 40x lens)