

# NSMCE2 antibody



Catalog Number: 113387

## Product name

NSMCE2 antibody

## Specificity

Human, Mouse, Rat; other species not tested.

## Antibody description

NSMCE2 Rabbit Polyclonal antibody. Positive WB detected in HeLa cells, human brain tissue, human spleen tissue, Jurkat cells, mouse spleen tissue, SH-SY5Y cells. Positive IF detected in SH-SY5Y cells. Observed molecular weight by Western-blot: 28 kDa

## Preparation

This antibody was obtained by immunization of NSMCE2 recombinant protein (Accession Number: XM\_047421702). Purification method: Antigen affinity purified.

## Formulation

PBS with 0.02% sodium azide and 50% glycerol pH 7.3.

## Storage

Store at -20°C. DO NOT ALIQUOT

## Clonality

Polyclonal

## Ig Type

Rabbit IgG

## Applications

ELISA, WB, IF

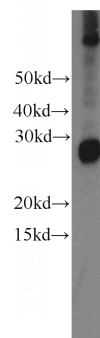
## Dilutions

Recommended Dilution:

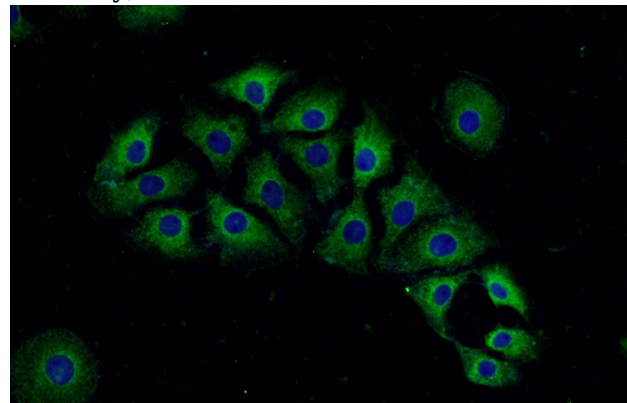
WB: 1:500-1:5000

IF: 1:20-1:200

## Validations



HeLa cells were subjected to SDS PAGE followed by western blot with Catalog No:113387(NSMCE2 antibody) at dilution of 1:500



Immunofluorescent analysis of (-20oc Ethanol) fixed SH-SY5Y cells using Catalog No:113387(NSMCE2 Antibody) at dilution of 1:50 and Alexa Fluor 488-conjugated AffiniPure Goat Anti-Rabbit IgG(H+L)