

# NuMA antibody



Catalog Number: 113368

---

## Product name

NuMA antibody

## Specificity

Human, Mouse, Rat; other species not tested.

## Antibody description

NuMA Rabbit Polyclonal antibody. Positive WB detected in HeLa cells. Observed molecular weight by Western-blot: 238 kDa

## Preparation

This antibody was obtained by immunization of NuMA recombinant protein (Accession Number: BC013023). Purification method: Antigen affinity purified.

## Formulation

PBS with 0.02% sodium azide and 50% glycerol pH 7.3.

## Storage

Store at -20°C. DO NOT ALIQUOT

## Clonality

Polyclonal

## Ig Type

Rabbit IgG

## Applications

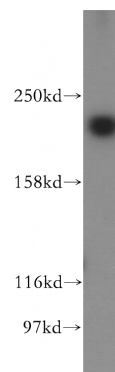
ELISA, WB

## Dilutions

Recommended Dilution:

WB: 1:200-1:1000

## Validations



HeLa cells were subjected to SDS PAGE followed by western blot with Catalog No:113368(NUMA1 antibody) at dilution of 1:300