

NUFIP1 antibody

Catalog Number: 113366

Product name

NUFIP1 antibody

IP: 1:200-1:2000

IHC: 1:20-1:200

Specificity

Human, Mouse, Rat; other species not tested.

Antibody description

NUFIP1 Rabbit Polyclonal antibody. Positive IP detected in HeLa cells. Positive WB detected in A375 cells, HeLa cells. Positive IHC detected in human ovary tumor tissue. Observed molecular weight by Western-blot: 70-75 kDa

Preparation

This antibody was obtained by immunization of NUFIP1 recombinant protein (Accession Number: BC017745). Purification method: Antigen affinity purified.

Formulation

PBS with 0.02% sodium azide and 50% glycerol pH 7.3.

Storage

Store at -20°C. DO NOT ALIQUOT

Clonality

Polyclonal

Ig Type

Rabbit IgG

Applications

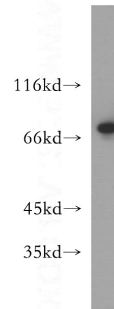
ELISA, WB, IHC, IP

Dilutions

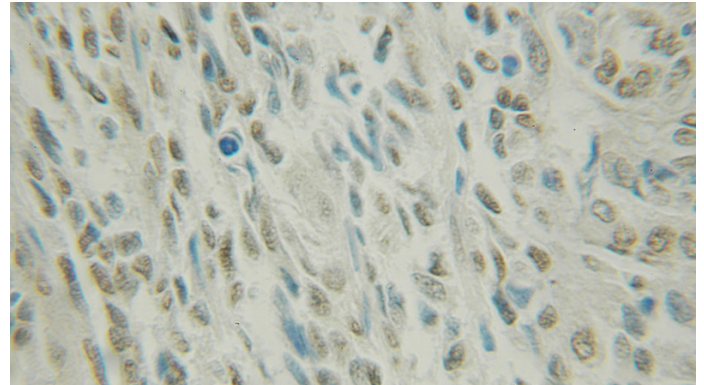
Recommended Dilution:

WB: 1:500-1:5000

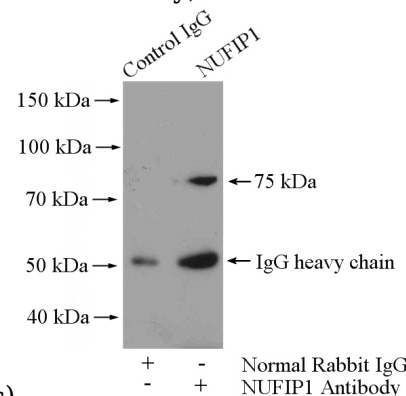
Validations



A375 cells were subjected to SDS PAGE followed by western blot with Catalog No:113366(NUFIP1 antibody) at dilution of 1:400



Immunohistochemical of paraffin-embedded human ovary tumor using Catalog No:113366(NUFIP1 antibody) at dilution of 1:50



(under 10x lens)

IP Result of anti-NUFIP1 (IP:Catalog No:113366, 4ug; Detection:Catalog No:113366 1:800) with

NUFIP1 antibody



Catalog Number: 113366

HeLa cells lysate 1200ug.