

# NUDT16 antibody



Catalog Number: 113357

## Product name

NUDT16 antibody

IP: 1:500-1:5000

IHC: 1:20-1:200

## Specificity

Human; other species not tested.

IF: 1:20-1:200

## Antibody description

NUDT16 Rabbit Polyclonal antibody. Positive IF detected in HEK-293 cells. Positive IHC detected in human kidney tissue. Positive WB detected in HeLa cells, HEK-293 cells. Positive IP detected in HEK-293 cells. Observed molecular weight by Western-blot: 21 kDa

## Validations



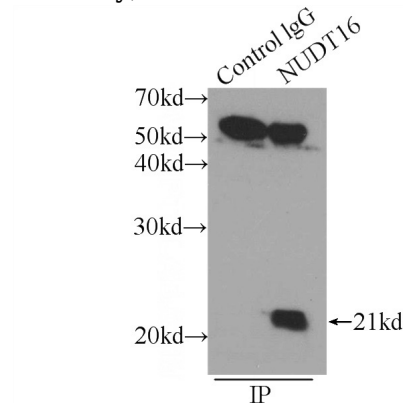
## Preparation

This antibody was obtained by immunization of NUDT16 recombinant protein (Accession Number: NM\_152395). Purification method: Antigen affinity purified.

HeLa cells were subjected to SDS PAGE followed by western blot with Catalog No:113357(NUDT16 antibody) at dilution of 1:2500

## Formulation

PBS with 0.02% sodium azide and 50% glycerol pH 7.3.



## Storage

Store at -20°C. DO NOT ALIQUOT

## Clonality

Polyclonal

## Ig Type

Rabbit IgG

## Applications

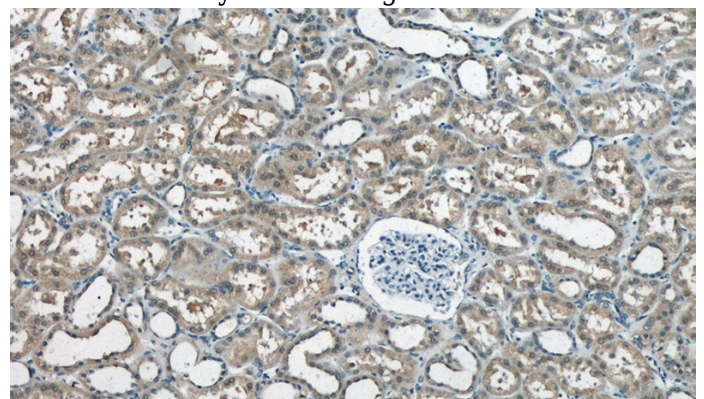
ELISA, WB, IHC, IP, IF

## Dilutions

Recommended Dilution:

WB: 1:1000-1:10000

IP Result of anti-NUDT16 (IP:Catalog No:113357, 3ug; Detection:Catalog No:113357 1:1000) with HEK-293 cells lysate 2400ug.

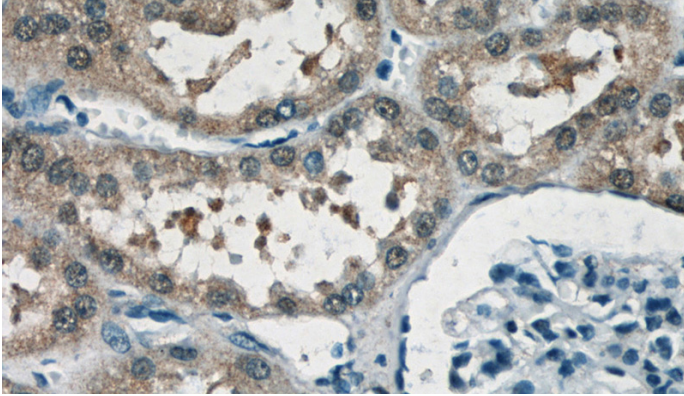


# NUDT16 antibody

Catalog Number: 113357

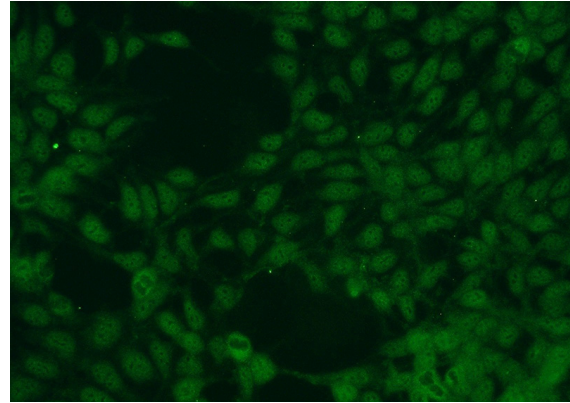
---

Immunohistochemistry of paraffin-embedded human kidney tissue slide using Catalog No:113357(NUDT16 Antibody) at dilution of 1:50 (under 10x lens)



Immunohistochemistry of paraffin-embedded human kidney tissue slide using Catalog

No:113357(NUDT16 Antibody) at dilution of 1:50 (under 40x lens)



Immunofluorescent analysis of HEK-293 cells using Catalog No:113357(NUDT16 Antibody) at dilution of 1:50 and Alexa Fluor 488-conjugated AffiniPure Goat Anti-Rabbit IgG(H+L)