

OLFM3 antibody

Catalog Number: 113340

Product name

OLFM3 antibody

IHC: 1:20-1:200

IF: 1:10-1:100

Specificity

Human, Mouse; other species not tested.

Antibody description

OLFM3 Rabbit Polyclonal antibody. Positive WB detected in mouse liver tissue, A2780 cells, human liver tissue, NIH/3T3 cells, PC-3 cells. Positive IHC detected in human liver cancer tissue. Positive IF detected in HepG2 cells. Observed molecular weight by Western-blot: 50-55 kDa

Preparation

This antibody was obtained by immunization of OLFM3 recombinant protein (Accession Number: NM_058170). Purification method: Antigen affinity purified.

Formulation

PBS with 0.02% sodium azide and 50% glycerol pH 7.3.

Storage

Store at -20°C. DO NOT ALIQUOT

Clonality

Polyclonal

Ig Type

Rabbit IgG

Applications

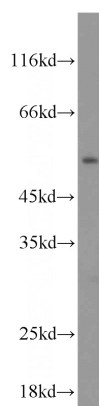
ELISA, WB, IF, IHC

Dilutions

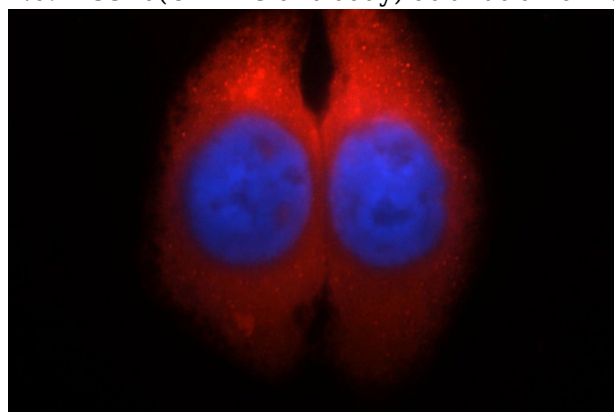
Recommended Dilution:

WB: 1:200-1:2000

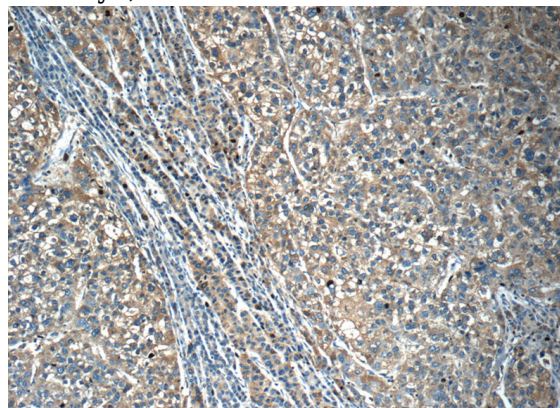
Validations



mouse liver tissue were subjected to SDS PAGE followed by western blot with Catalog No:113340(OLFM3 antibody) at dilution of 1:500



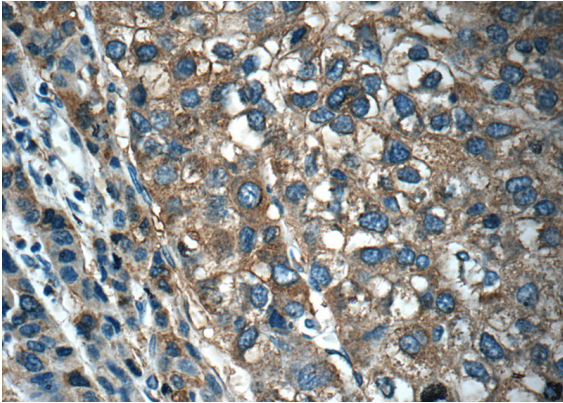
Immunofluorescent analysis of HepG2 cells, using OLFM3 antibody Catalog No:113340 at 1:25 dilution and Rhodamine-labeled goat anti-rabbit IgG (red). Blue pseudocolor = DAPI (fluorescent DNA dye).



OLFM3 antibody

Catalog Number: 113340

Immunohistochemistry of paraffin-embedded human liver cancer tissue slide using Catalog No:113340(OLFM3 Antibody) at dilution of 1:50 (under 10x lens)



Immunohistochemistry of paraffin-embedded human liver cancer tissue slide using Catalog No:113340(OLFM3 Antibody) at dilution of 1:50 (under 40x lens)