

# ODF2L antibody



Catalog Number: 113326

## Product name

ODF2L antibody

## Specificity

Human, Mouse, Rat; other species not tested.

## Antibody description

ODF2L Rabbit Polyclonal antibody. Positive WB detected in HEK-293 cells, mouse kidney tissue, rat kidney tissue. Observed molecular weight by Western-blot: 60-74 kDa

## Preparation

This antibody was obtained by immunization of ODF2L recombinant protein (Accession Number: BC009779). Purification method: Antigen Affinity purified.

## Formulation

PBS with 0.02% sodium azide and 50% glycerol pH 7.3.

## Storage

Store at -20°C. DO NOT ALIQUOT

## Clonality

Polyclonal

## Ig Type

Rabbit IgG

## Applications

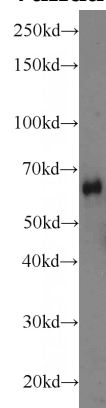
ELISA, WB

## Dilutions

Recommended Dilution:

WB: 1:500-1:5000

## Validations



HEK-293 cells were subjected to SDS PAGE followed by western blot with Catalog No:113326(ODF2L antibody) at dilution of 1:600