

NOMO2 antibody



Catalog Number: 113301

Product name

NOMO2 antibody

IP: 1:500-1:5000

IHC: 1:20-1:200

Specificity

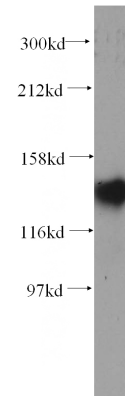
Human; other species not tested.

IF: 1:10-1:100

Antibody description

NOMO2 Rabbit Polyclonal antibody. Positive WB detected in BxPC-3 cells, HEK-293 cells. Positive IP detected in HEK-293 cells. Positive IHC detected in human pancreas cancer tissue. Positive IF detected in BxPC-3 cells. Observed molecular weight by Western-blot: 130 kDa

Validations



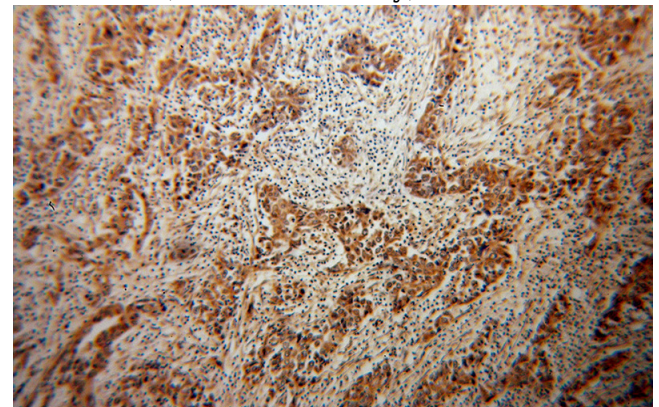
Preparation

This antibody was obtained by immunization of NOMO2 recombinant protein (Accession Number: NM_173614). Purification method: Antigen affinity purified.

BxPC-3 cells were subjected to SDS PAGE followed by western blot with Catalog No:113301(NOMO2 antibody) at dilution of 1:300

Formulation

PBS with 0.02% sodium azide and 50% glycerol pH 7.3.



Storage

Store at -20°C. DO NOT ALIQUOT

Clonality

Polyclonal

Ig Type

Rabbit IgG

Applications

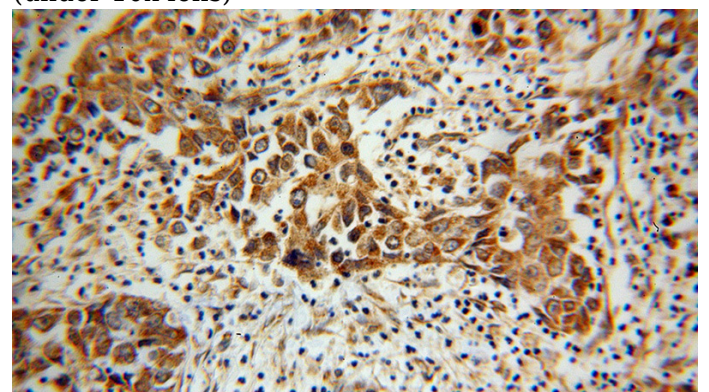
ELISA, WB, IHC, IF, IP

Dilutions

Recommended Dilution:

WB: 1:500-1:5000

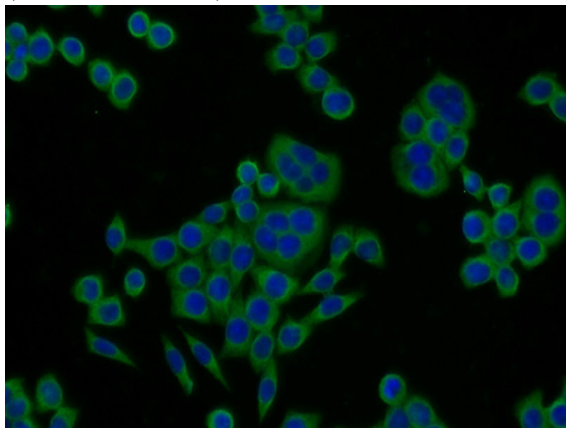
Immunohistochemical of paraffin-embedded human pancreas cancer using Catalog No:113301(NOMO2 antibody) at dilution of 1:100 (under 10x lens)



NOMO2 antibody

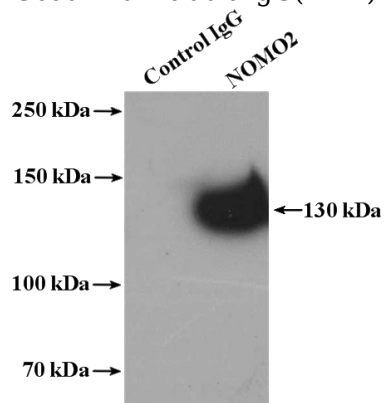
Catalog Number: 113301

Immunohistochemical of paraffin-embedded human pancreas cancer using Catalog No:113301(NOMO2 antibody) at dilution of 1:100 (under 40x lens)



Immunofluorescent analysis of BxPC-3 cells using

Catalog No:113301(NOMO2 Antibody) at dilution of 1:25 and Alexa Fluor 488-conjugated AffiniPure Goat Anti-Rabbit IgG(H+L)



IP Result of anti-NOMO2 (IP:Catalog No:113301, 4ug; Detection:Catalog No:113301 1:1000) with HEK-293 cells lysate 2400ug.