

NSE antibody

Catalog Number: 113288

Product name

NSE antibody

IP: 1:200-1:1000

IHC: 1:20-1:200

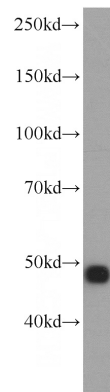
Specificity

Human, Mouse, Rat; other species not tested.

Antibody description

NSE Rabbit Polyclonal antibody. Positive IP detected in mouse brain tissue. Positive WB detected in human brain tissue, mouse brain tissue. Positive IHC detected in human testis tissue, human brain tissue, human lung tissue. Observed molecular weight by Western-blot: 47kd

Validations



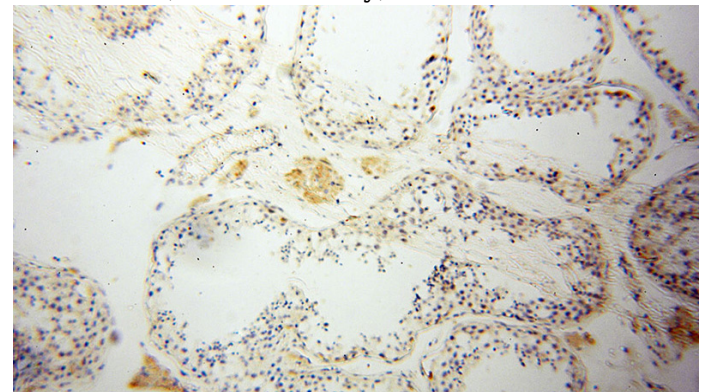
Preparation

This antibody was obtained by immunization of NSE recombinant protein (Accession Number: NM_001975). Purification method: Antigen affinity purified.

human brain tissue were subjected to SDS PAGE followed by western blot with Catalog No:113288(ENO2 antibody) at dilution of 1:400

Formulation

PBS with 0.1% sodium azide and 50% glycerol pH 7.3.



Storage

Store at -20°C. DO NOT ALIQUOT

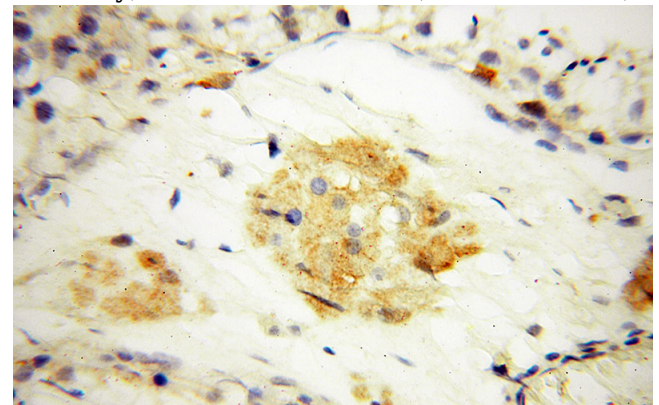
Clonality

Polyclonal

Immunohistochemical of paraffin-embedded human testis using Catalog No:113288(ENO2 antibody) at dilution of 1:100 (under 10x lens)

Ig Type

Rabbit IgG



Applications

ELISA, WB, IHC, IP

Dilutions

Recommended Dilution:

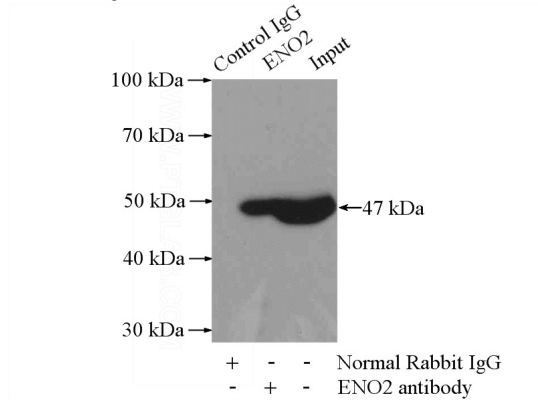
WB: 1:200-1:1000

Immunohistochemical of paraffin-embedded human testis using Catalog No:113288(ENO2 antibody) at dilution of 1:100 (under 10x lens)

NSE antibody

Catalog Number: 113288

antibody) at dilution of 1:100 (under 40x lens)



IP Result of anti-ENO2 (IP:Catalog No:113288, 4ug; Detection:Catalog No:113288 1:300) with mouse brain tissue lysate 4000ug.