

NLRX1 antibody



Catalog Number: 113243

Product name

NLRX1 antibody

Specificity

Human, Mouse, Rat; other species not tested.

Antibody description

NLRX1 Rabbit Polyclonal antibody. Positive IP detected in mouse heart tissue. Positive WB detected in HEK-293 cells, HeLa cells, HepG2 cells, MCF7 cells, mouse heart tissue, mouse skeletal muscle tissue. Positive IHC detected in human heart tissue, human liver tissue. Positive IF detected in HepG2 cells. Observed molecular weight by Western-blot: 100-110 kDa

Preparation

This antibody was obtained by immunization of NLRX1 recombinant protein (Accession Number: BC013199). Purification method: Antigen affinity purified.

Formulation

PBS with 0.02% sodium azide and 50% glycerol pH 7.3.

Storage

Store at -20°C. DO NOT ALIQUOT

Clonality

Polyclonal

Ig Type

Rabbit IgG

Applications

ELISA, WB, IF, IHC, IP

Dilutions

Recommended Dilution:

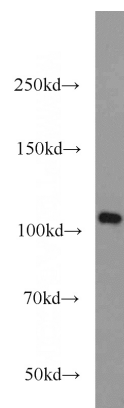
WB: 1:500-1:5000

IP: 1:200-1:2000

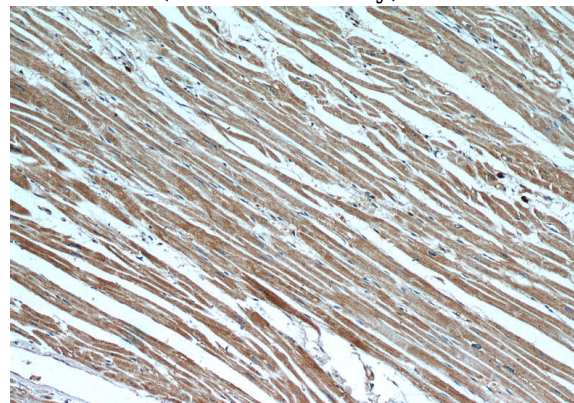
IHC: 1:20-1:200

IF: 1:10-1:100

Validations



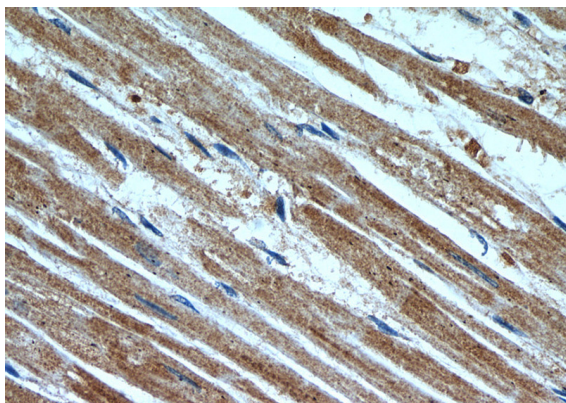
HEK-293 cells were subjected to SDS PAGE followed by western blot with Catalog No:113243(NLRX1 antibody) at dilution of 1:1000



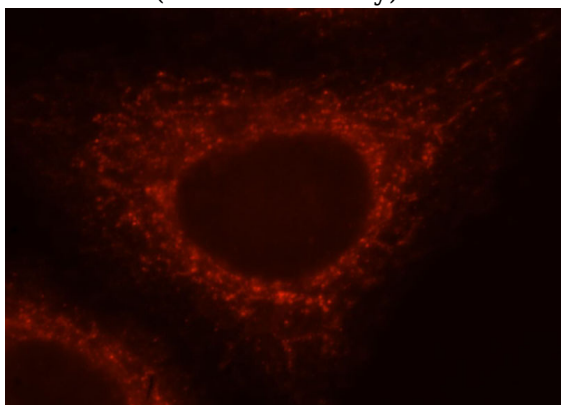
Immunohistochemistry of paraffin-embedded human heart slide using Catalog No:113243(NLRX1 Antibody) at dilution of 1:50

NLRX1 antibody

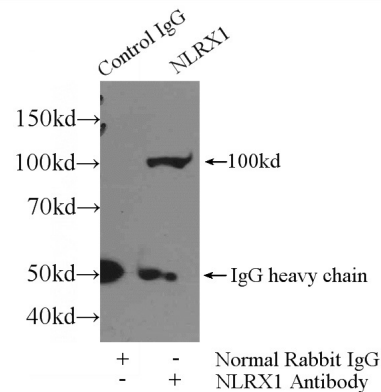
Catalog Number: 113243



Immunohistochemistry of paraffin-embedded human heart slide using Catalog No:113243(NLRX1 Antibody) at dilution of 1:50



Immunofluorescent analysis of HepG2 cells, using NLRX1 antibody Catalog No:113243 at 1:25 dilution and Rhodamine-labeled goat anti-rabbit



IgG (red).

IP Result of anti-NLRX1 (IP:Catalog No:113243, 3ug; Detection:Catalog No:113243 1:800) with mouse heart tissue lysate 3520ug.