

# Nidogen 2 antibody

Catalog Number: 113183

## Product name

Nidogen 2 antibody

IHC: 1:20-1:200

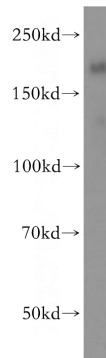
## Specificity

Human, Mouse, Rat; other species not tested.

## Validations

## Antibody description

Nidogen 2 Rabbit Polyclonal antibody. Positive WB detected in human placenta tissue, human heart tissue. Positive IHC detected in human kidney tissue. Observed molecular weight by Western-blot: 200kd



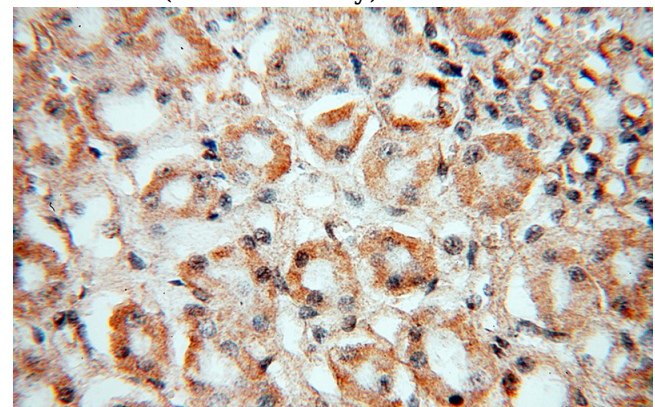
## Preparation

This antibody was obtained by immunization of Nidogen 2 recombinant protein (Accession Number: BC035608). Purification method: Antigen affinity purified.

human placenta tissue were subjected to SDS PAGE followed by western blot with Catalog No:113183(NID2 antibody) at dilution of 1:400

## Formulation

PBS with 0.02% sodium azide and 50% glycerol pH 7.3.



## Storage

Store at -20°C. DO NOT ALIQUOT

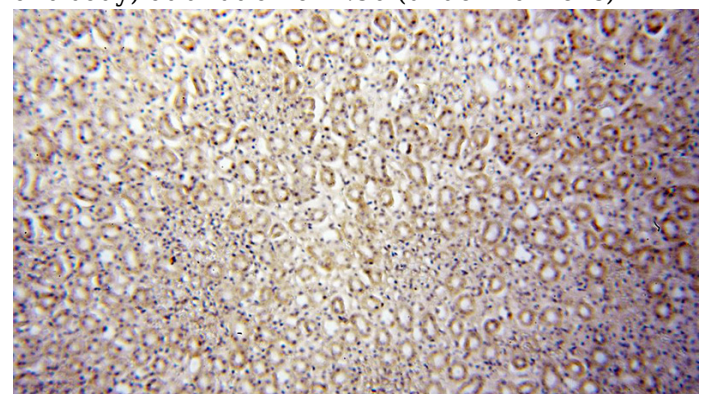
## Clonality

Polyclonal

Immunohistochemical of paraffin-embedded human kidney using Catalog No:113183(NID2 antibody) at dilution of 1:50 (under 40x lens)

## Ig Type

Rabbit IgG



## Applications

ELISA, WB, IHC

## Dilutions

Recommended Dilution:

WB: 1:200-1:2000

Immunohistochemical of paraffin-embedded human kidney using Catalog No:113183(NID2 antibody) at dilution of 1:50 (under 10x lens)