

NHE8 antibody

Catalog Number: 113176

Product name

NHE8 antibody

Recommended Dilution:

WB: 1:500-1:5000

Specificity

Human, Mouse, Rat; other species not tested.

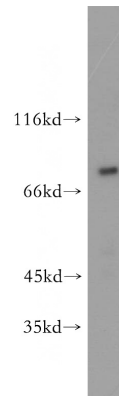
IHC: 1:20-1:200

IF: 1:20-1:200

Antibody description

NHE8 Rabbit Polyclonal antibody. Positive IHC detected in human kidney tissue, human lung tissue, human ovary tissue, human placenta tissue, human skin tissue, human testis tissue. Positive IF detected in HEK-293 cells. Positive WB detected in mouse kidney tissue, HEK-293 cells, mouse colon tissue, mouse liver tissue. Observed molecular weight by Western-blot: 85 kDa

Validations



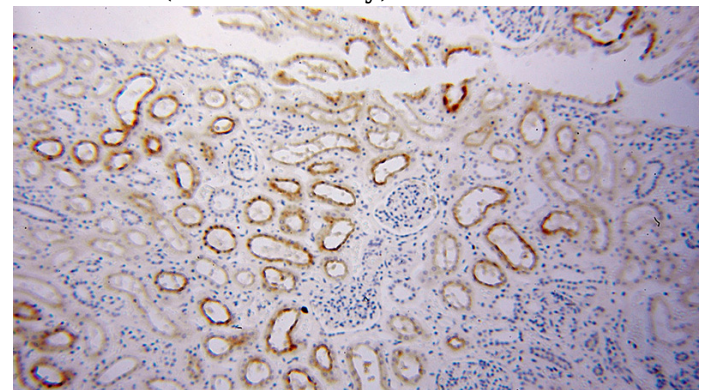
Preparation

This antibody was obtained by immunization of NHE8 recombinant protein (Accession Number: NM_015266). Purification method: Antigen affinity purified.

mouse kidney tissue were subjected to SDS PAGE followed by western blot with Catalog No:113176(NHE8 antibody) at dilution of 1:500

Formulation

PBS with 0.02% sodium azide and 50% glycerol pH 7.3.



Storage

Store at -20°C. DO NOT ALIQUOT

Clonality

Polyclonal

Ig Type

Rabbit IgG

Applications

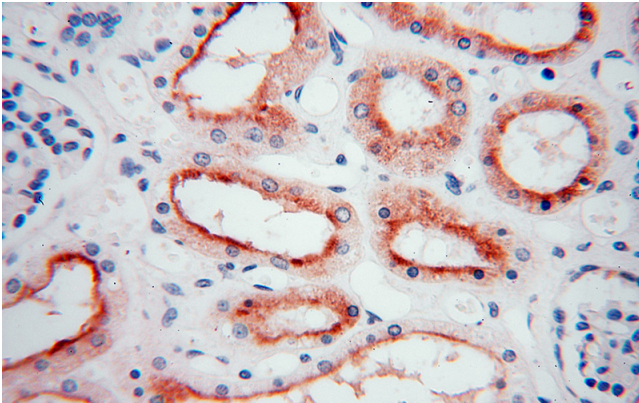
ELISA, WB, IHC, IF

Immunohistochemical of paraffin-embedded human kidney using Catalog No:113176(NHE8 antibody) at dilution of 1:100 (under 10x lens)

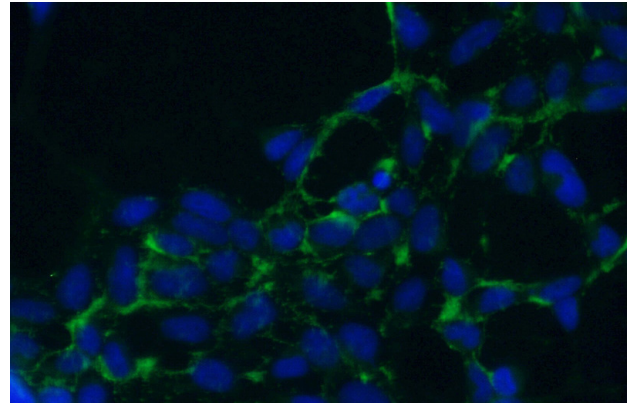
Dilutions

NHE8 antibody

Catalog Number: 113176



Immunohistochemical of paraffin-embedded human kidney using Catalog No:113176(NHE8 antibody) at dilution of 1:100 (under 40x lens)



Immunofluorescent analysis of (-20oc Ethanol) fixed HEK-293 cells using Catalog No:113176(NHE8 Antibody) at dilution of 1:50 and Alexa Fluor 488-conjugated AffiniPure Goat Anti-Rabbit IgG(H+L)