

# NFS1 antibody

Catalog Number: 113164

## Product name

NFS1 antibody

## Specificity

Human, Mouse, Rat; other species not tested.

## Antibody description

NFS1 Rabbit Polyclonal antibody. Positive IF detected in HepG2 cells. Positive IHC detected in human heart tissue, human brain tissue, human kidney tissue, human liver tissue, human ovary tissue, human placenta tissue, human spleen tissue, human testis tissue. Positive IP detected in HepG2 cells. Positive WB detected in A549 cells, HeLa cells, HepG2 cells, human heart tissue. Observed molecular weight by Western-blot: 50 kDa

## Preparation

This antibody was obtained by immunization of NFS1 recombinant protein (Accession Number: NM\_181679). Purification method: Antigen affinity purified.

## Formulation

PBS with 0.02% sodium azide and 50% glycerol pH 7.3.

## Storage

Store at -20°C. DO NOT ALIQUOT

## Clonality

Polyclonal

## Ig Type

Rabbit IgG

## Applications

ELISA, WB, IHC, IF, IP

## Dilutions

Recommended Dilution:

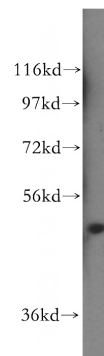
WB: 1:200-1:2000

IP: 1:200-1:2000

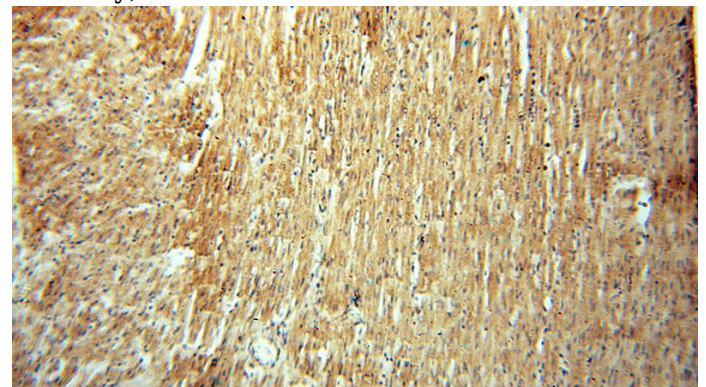
IHC: 1:20-1:200

IF: 1:10-1:100

## Validations



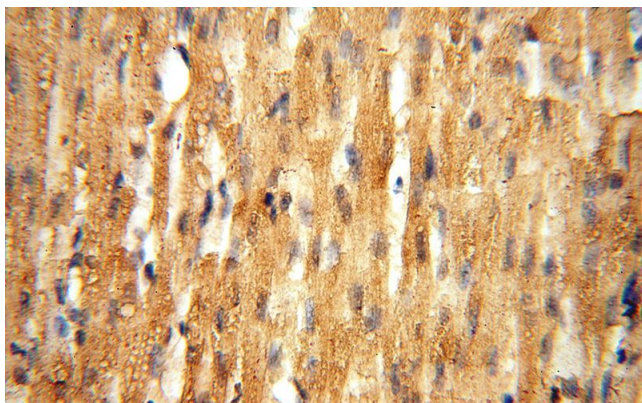
A549 cells were subjected to SDS PAGE followed by western blot with Catalog No:113164(NFS1 antibody) at dilution of 1:500



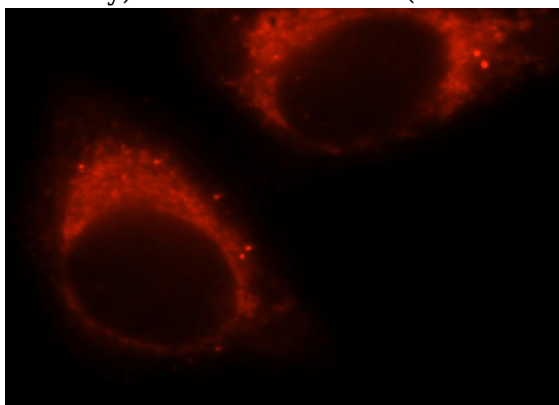
Immunohistochemical of paraffin-embedded human heart using Catalog No:113164(NFS1 antibody) at dilution of 1:100 (under 10x lens)

# NFS1 antibody

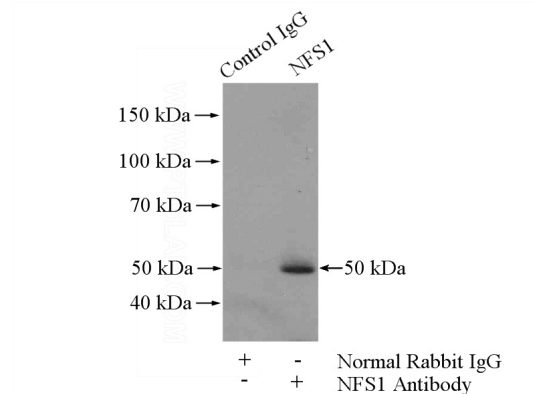
Catalog Number: 113164



Immunohistochemical of paraffin-embedded human heart using Catalog No:113164(NFS1 antibody) at dilution of 1:100 (under 40x lens)



Immunofluorescent analysis of HepG2 cells, using NFS1 antibody Catalog No:113164 at 1:25 dilution and Rhodamine-labeled goat anti-rabbit IgG (red).



IP Result of anti-NFS1 (IP:Catalog No:113164, 4ug; Detection:Catalog No:113164 1:500) with HepG2 cells lysate 3200ug.