

NF-M-Specific antibody

Catalog Number: 113163

Product name

NF-M-Specific antibody

IP: 1:500-1:5000

IHC: 1:50-1:500

Specificity

Human, Mouse, Rat; other species not tested.

IF: 1:10-1:100

Antibody description

NF-M-Specific Rabbit Polyclonal antibody. Positive WB detected in mouse brain tissue, human brain tissue, rat brain tissue. Positive IP detected in rat brain tissue. Positive IHC detected in human brain tissue, rat brain tissue. Positive IF detected in Hela cells. Observed molecular weight by Western-blot: 140-160 kDa

Preparation

This antibody was obtained by immunization of Peptide (Accession Number: NM_005382). Purification method: Antigen affinity purified.

Formulation

PBS with 0.02% sodium azide and 50% glycerol pH 7.3.

Storage

Store at -20°C. DO NOT ALIQUOT

Clonality

Polyclonal

Ig Type

Rabbit IgG

Applications

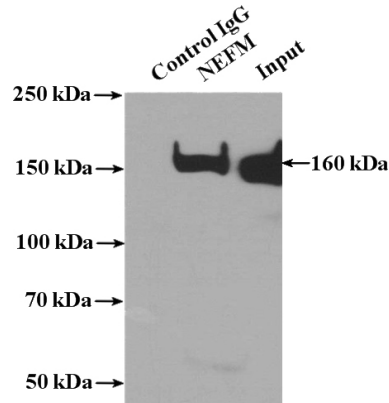
ELISA, IF, WB, IP, IHC

Dilutions

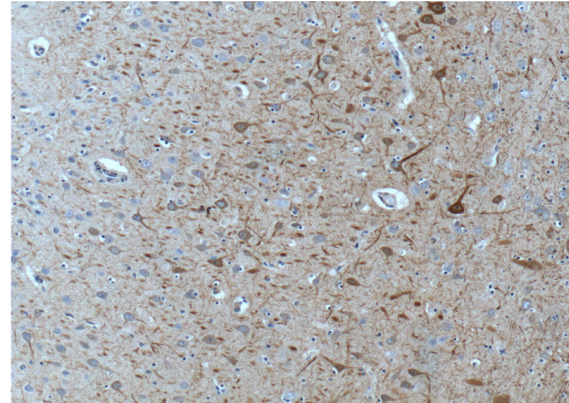
Recommended Dilution:

WB: 1:500-1:5000

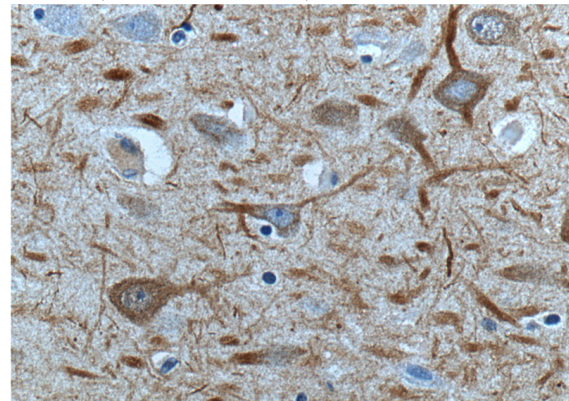
Validations



IP Result of anti-NEFM-Specific (IP:Catalog No:113163, 4ug; Detection:Catalog No:113163 1:1000) with rat brain tissue lysate 4000ug.



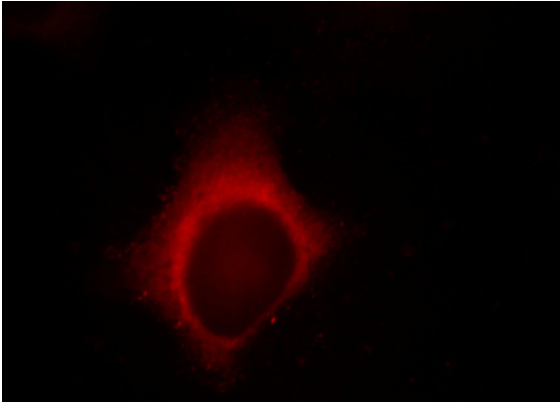
Immunohistochemistry of paraffin-embedded human brain tissue slide using Catalog No:113163(NEFM-Specific Antibody) at dilution of 1:200 (under 10x lens).



NF-M-Specific antibody

Catalog Number: 113163

Immunohistochemistry of paraffin-embedded human brain tissue slide using Catalog No:113163(NEFM-Specific Antibody) at dilution of 1:200 (under 40x lens).



Immunofluorescent analysis of Hela cells, using NEFM antibody Catalog No:113163 at 1:25 dilution and Rhodamine-labeled goat anti-rabbit IgG (red).