

# NEDD4L antibody



Catalog Number: 113097

## Product name

NEDD4L antibody

Recommended Dilution:

WB: 1:500-1:5000

## Specificity

Human, Mouse, Rat; other species not tested.

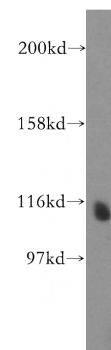
IHC: 1:20-1:200

IF: 1:20-1:200

## Antibody description

NEDD4L Rabbit Polyclonal antibody. Positive WB detected in K-562 cells, C6 cells, HT-1080 cells, PC-3 cells. Positive IHC detected in human prostate cancer tissue, human prostate hyperplasia tissue, human stomach cancer tissue. Positive IF detected in PC-3 cells. Observed molecular weight by Western-blot: 112 kDa, 125 kDa

## Validations



## Preparation

This antibody was obtained by immunization of NEDD4L recombinant protein (Accession Number: NM\_001243960). Purification method: Antigen affinity purified.

K-562 cells were subjected to SDS PAGE followed by western blot with Catalog No:113097(NEDD4L antibody) at dilution of 1:500

## Formulation

PBS with 0.02% sodium azide and 50% glycerol pH 7.3.

## Storage

Store at -20°C. DO NOT ALIQUOT

## Clonality

Polyclonal

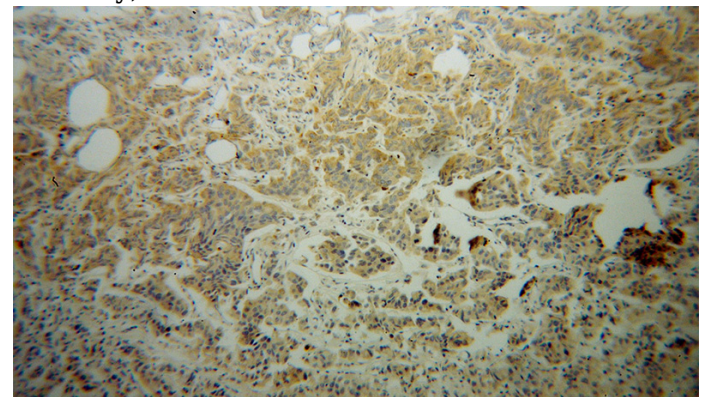
## Ig Type

Rabbit IgG

## Applications

ELISA, WB, IHC, IF

## Dilutions

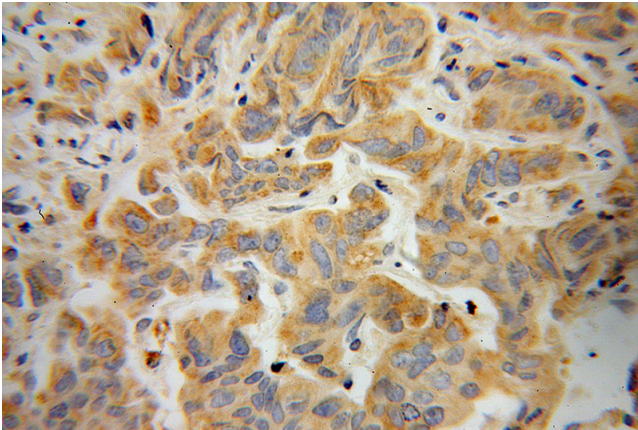


Immunohistochemical of paraffin-embedded human prostate cancer using Catalog No:113097(NEDD4L antibody) at dilution of 1:100 (under 10x lens)

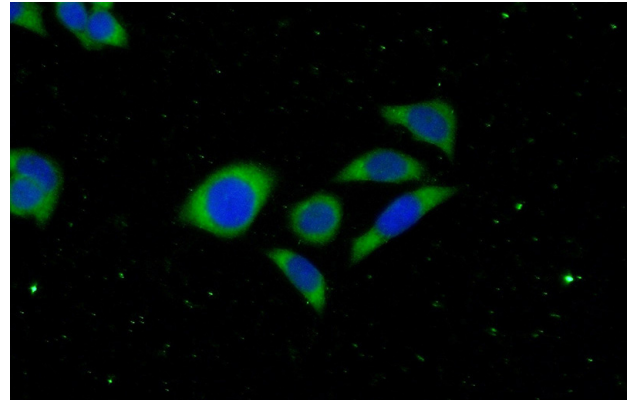
# NEDD4L antibody

Catalog Number: 113097

---



Immunohistochemical of paraffin-embedded human prostate cancer using Catalog No:113097(NEDD4L antibody) at dilution of 1:100 (under 40x lens)



Immunofluorescent analysis of (-20oc Ethanol) fixed PC-3 cells using Catalog No:113097(NEDD4L Antibody) at dilution of 1:50 and Alexa Fluor 488-conjugated AffiniPure Goat Anti-Rabbit IgG(H+L)