

# NDUFC2 antibody



Catalog Number: 113080

## Product name

NDUFC2 antibody

IHC: 1:20-1:200

## Specificity

Human, Mouse; other species not tested.

## Antibody description

NDUFC2 Rabbit Polyclonal antibody. Positive WB detected in human kidney tissue, A549 cells, human liver tissue, mouse brain tissue. Positive IHC detected in human kidney tissue, human hepat°Cirrhosis tissue. Observed molecular weight by Western-blot: 14kd

## Preparation

This antibody was obtained by immunization of NDUFC2 recombinant protein (Accession Number: NM\_004549). Purification method: Antigen affinity purified.

## Formulation

PBS with 0.02% sodium azide and 50% glycerol pH 7.3.

## Storage

Store at -20°C. DO NOT ALIQUOT

## Clonality

Polyclonal

## Ig Type

Rabbit IgG

## Applications

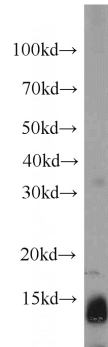
ELISA, WB, IHC

## Dilutions

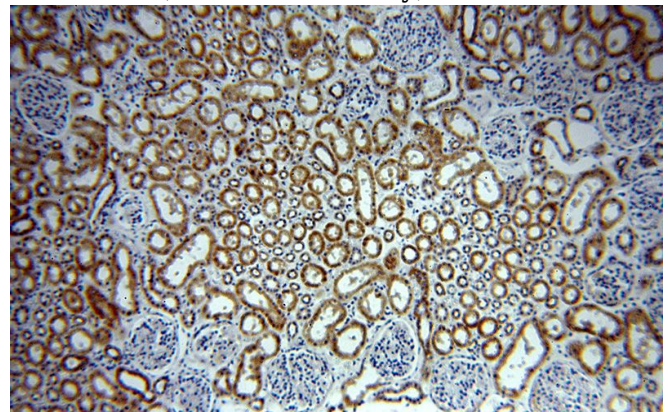
Recommended Dilution:

WB: 1:500-1:5000

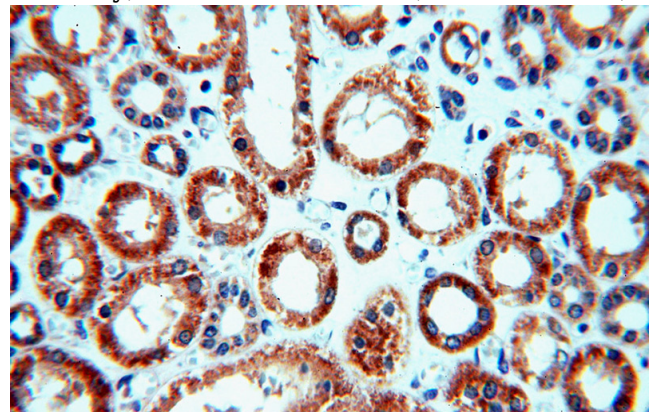
## Validations



human kidney tissue were subjected to SDS PAGE followed by western blot with Catalog No:113080(NDUFC2 antibody) at dilution of 1:500



Immunohistochemical of paraffin-embedded human kidney using Catalog No:113080(NDUFC2 antibody) at dilution of 1:400 (under 10x lens)



Immunohistochemical of paraffin-embedded human kidney using Catalog No:113080(NDUFC2 antibody) at dilution of 1:400 (under 40x lens)