

NCBP1 antibody

Catalog Number: 113034

Product name

NCBP1 antibody

IP: 1:200-1:2000

IHC: 1:20-1:200

Specificity

Human, Mouse; other species not tested.

Antibody description

NCBP1 Rabbit Polyclonal antibody. Positive IHC detected in human lung cancer tissue, human kidney tissue. Positive WB detected in HEK-293 cells, HeLa cells, human brain tissue. Positive IP detected in HeLa cells. Observed molecular weight by Western-blot: 80kd

Preparation

This antibody was obtained by immunization of NCBP1 recombinant protein (Accession Number: NM_002486). Purification method: Antigen affinity purified.

Formulation

PBS with 0.1% sodium azide and 50% glycerol pH 7.3.

Storage

Store at -20°C. DO NOT ALIQUOT

Clonality

Polyclonal

Ig Type

Rabbit IgG

Applications

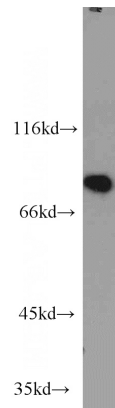
ELISA, WB, IHC, IP

Dilutions

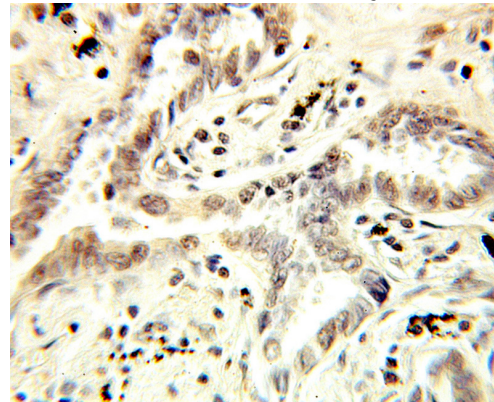
Recommended Dilution:

WB: 1:500-1:5000

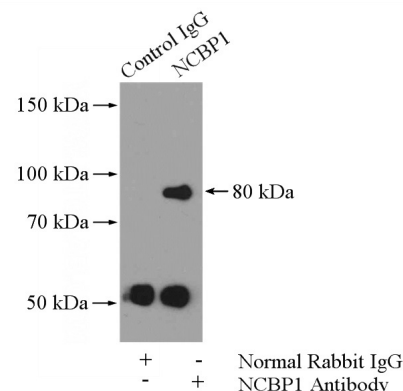
Validations



HEK-293 cells were subjected to SDS PAGE followed by western blot with Catalog No:113034(CBP80 antibody) at dilution of 1:1000



Immunohistochemical of paraffin-embedded human lung cancer using Catalog No:113034(CBP80 antibody) at dilution of 1:100 (under 10x lens)



IP Result of anti-CBP80 (IP:Catalog No:113034,

NCBP1 antibody



Catalog Number: 113034

4ug; Detection:Catalog No:113034 1:500) with HeLa cells lysate 2480ug.