

NCAPD3 antibody



Catalog Number: 113030

Product name

NCAPD3 antibody

IP: 1:200-1:2000

IF: 1:50-1:500

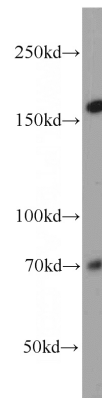
Specificity

Human; other species not tested.

Validations

Antibody description

NCAPD3 Rabbit Polyclonal antibody. Positive IF detected in HepG2 cells. Positive IP detected in HeLa cells. Positive WB detected in HepG2 cells, HeLa cells. Observed molecular weight by Western-blot: 165 kDa



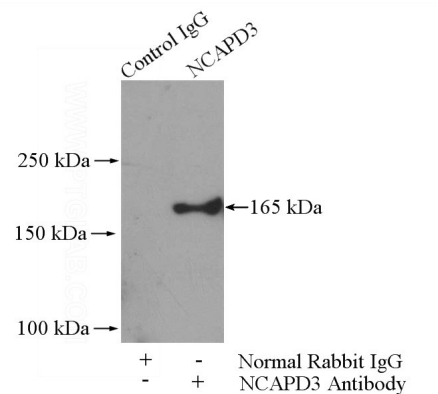
Preparation

This antibody was obtained by immunization of NCAPD3 recombinant protein (Accession Number: BC011408). Purification method: Antigen affinity purified.

HepG2 cells were subjected to SDS PAGE followed by western blot with Catalog No:113030(NCAPD3 antibody) at dilution of 1:800

Formulation

PBS with 0.02% sodium azide and 50% glycerol pH 7.3.



Storage

Store at -20°C. DO NOT ALIQUOT

IP Result of anti-NCAPD3 (IP:Catalog No:113030, 4ug; Detection:Catalog No:113030 1:500) with HeLa cells lysate 600ug.

Clonality

Polyclonal

Ig Type

Rabbit IgG

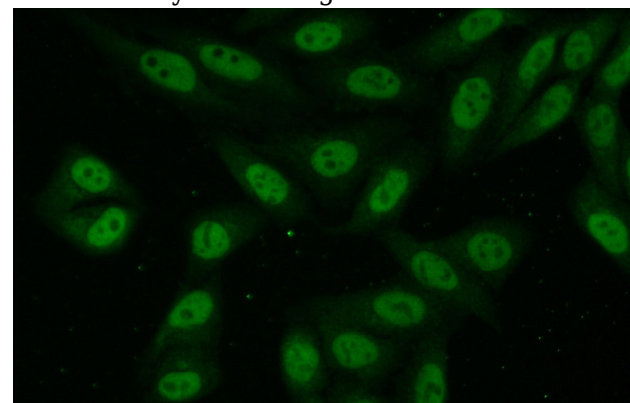
Applications

ELISA, WB, IP, IF

Dilutions

Recommended Dilution:

WB: 1:200-1:2000



Immunofluorescent analysis of (10% Formaldehyde) fixed HepG2 cells using Catalog No:113030 antibody

NCAPD3 antibody



Catalog Number: 113030

No:113030(NCAPD3 Antibody) at dilution of 1:50

and Alexa Fluor 488-conjugated AffiniPure Goat Anti-Rabbit IgG(H+L)