

# MYPN-Specific antibody



Catalog Number: 113000

## Product name

MYPN-Specific antibody

IHC: 1:20-1:200

IF: 1:10-1:100

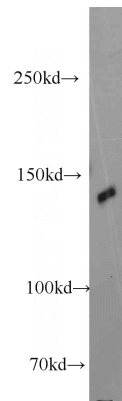
## Specificity

Human; other species not tested.

## Validations

## Antibody description

MYPN-Specific Rabbit Polyclonal antibody.  
Positive WB detected in HeLa cells. Positive IHC detected in human skeletal muscle tissue, human heart tissue. Positive IF detected in HepG2 cells. Observed molecular weight by Western-blot: 145 kDa



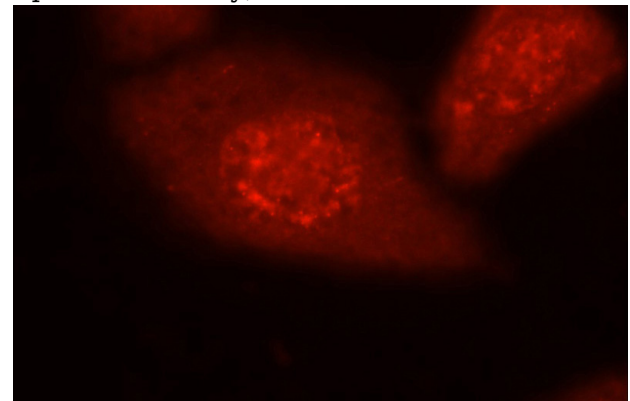
## Preparation

This antibody was obtained by immunization of Peptide (Accession Number: NM\_032578).  
Purification method: Antigen affinity purified.

HeLa cells were subjected to SDS PAGE followed by western blot with Catalog No:113000(MYPN-Specific antibody) at dilution of 1:300

## Formulation

PBS with 0.02% sodium azide and 50% glycerol pH 7.3.



## Storage

Store at -20°C. DO NOT ALIQUOT

## Clonality

Polyclonal

Immunofluorescent analysis of HepG2 cells using Catalog No:113000(MYPN-Specific Antibody) at dilution of 1:25 and Rhodamine-Goat anti-Rabbit

## Ig Type

Rabbit IgG

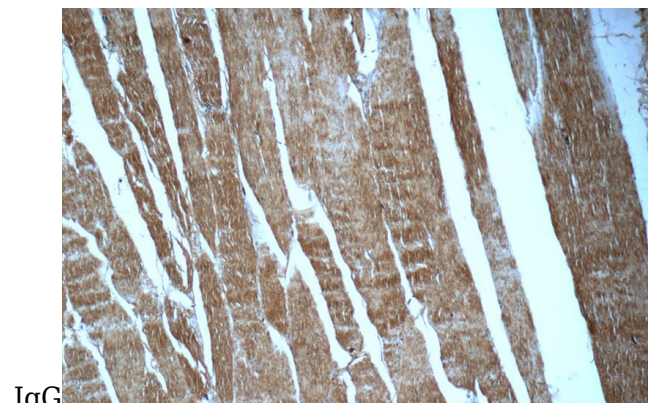
## Applications

ELISA, WB, IF, IHC

## Dilutions

Recommended Dilution:

WB: 1:200-1:2000



IgG

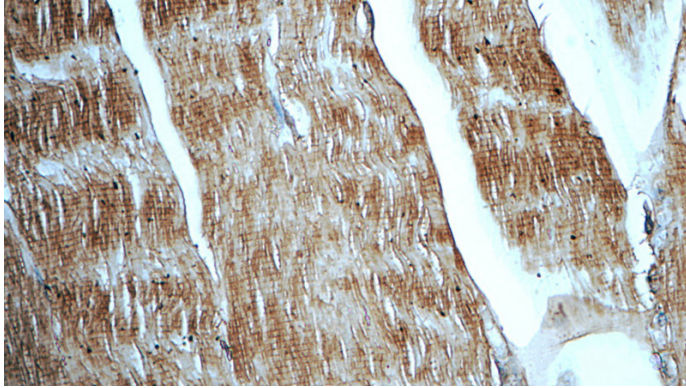
Immunohistochemistry of paraffin-embedded

# MYPN-Specific antibody

Catalog Number: 113000

---

human skeletal muscle tissue slide using Catalog No:113000(MYPN-Specific Antibody) at dilution of 1:50 (under 10x lens)



Immunohistochemistry of paraffin-embedded human skeletal muscle tissue slide using Catalog No:113000(MYPN-Specific Antibody) at dilution of 1:50 (under 40x lens)