

NAT10 antibody



Catalog Number: 112961

Product name

NAT10 antibody

Immunogen

Specificity

Human, Mouse, Rat; other species not tested.

Antibody description

NAT10 Rabbit Polyclonal antibody. Positive WB detected in HeLa cells, human brain tissue, mouse spleen tissue, mouse testis tissue. Positive IP detected in mouse testis tissue. Positive IF detected in HeLa cells. Observed molecular weight by Western-blot: 116 kDa

Preparation

This antibody was obtained by immunization of NAT10 recombinant protein (Accession Number: NM_024662). Purification method: Antigen affinity purified.

Formulation

PBS with 0.02% sodium azide and 50% glycerol pH 7.3.

Storage

Store at -20°C. DO NOT ALIQUOT

Clonality

Polyclonal

Ig Type

Rabbit IgG

Applications

ELISA, IF, IP, WB

Dilutions

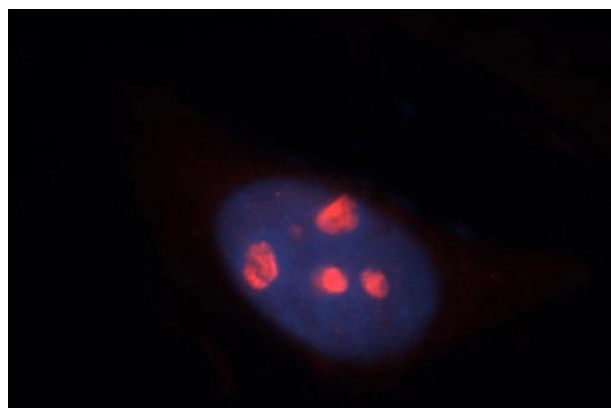
Recommended Dilution:

WB: 1:1000-1:10000

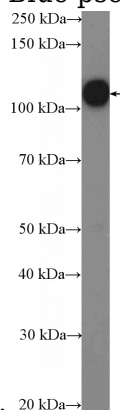
IP: 1:200-1:2000

IF: 1:20-1:200

Validations



Immunofluorescent analysis of HeLa cells, using NAT10 antibody Catalog No:112961 at 1:50 dilution and Rhodamine-labeled goat anti-rabbit IgG (red). Blue pseudocolor = DAPI (fluorescent



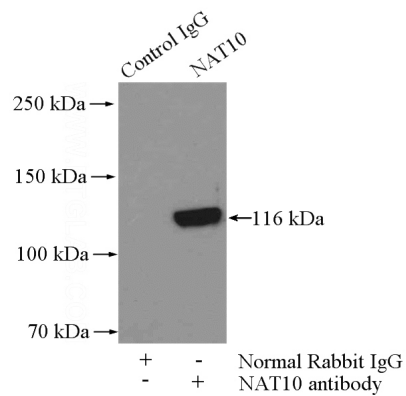
DNA dye).

HeLa cells were subjected to SDS PAGE followed by western blot with Catalog No:112961(NAT10 Antibody) at dilution of 1:3000

NAT10 antibody



Catalog Number: 112961



IP Result of anti-NAT10 (IP:Catalog No:112961, 2ug; Detection:Catalog No:112961 1:500) with mouse testis tissue lysate 4000ug.