

NASP antibody



Catalog Number: 112958

Product name

NASP antibody

WB: 1:500-1:5000

IP: 1:500-1:5000

Specificity

Human, Mouse, Rat; other species not tested.

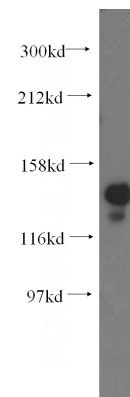
IHC: 1:20-1:200

IF: 1:10-1:100

Antibody description

NASP Rabbit Polyclonal antibody. Positive IHC detected in human testis tissue, human lymphoma tissue. Positive IF detected in MCF-7 cells. Positive IP detected in mouse testis tissue. Positive WB detected in mouse testis tissue. Observed molecular weight by Western-blot: 138kd

Validations



Preparation

This antibody was obtained by immunization of NASP recombinant protein (Accession Number: NM_002482). Purification method: Antigen affinity purified.

mouse testis tissue were subjected to SDS PAGE followed by western blot with Catalog No:112958(NASP antibody) at dilution of 1:1000

Formulation

PBS with 0.1% sodium azide and 50% glycerol pH 7.3.

Storage

Store at -20°C. DO NOT ALIQUOT

Clonality

Polyclonal

Ig Type

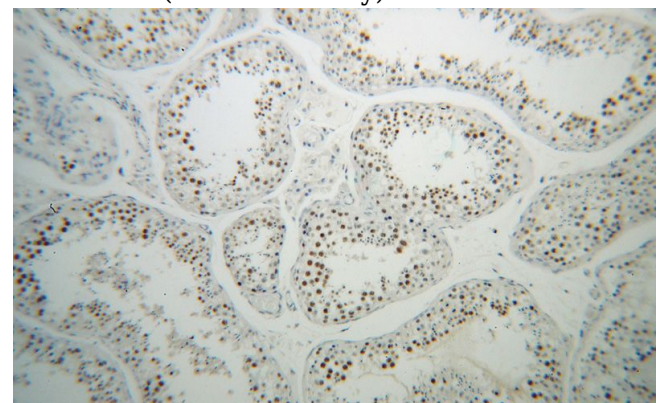
Rabbit IgG

Applications

ELISA, WB, IHC, IF, IP

Dilutions

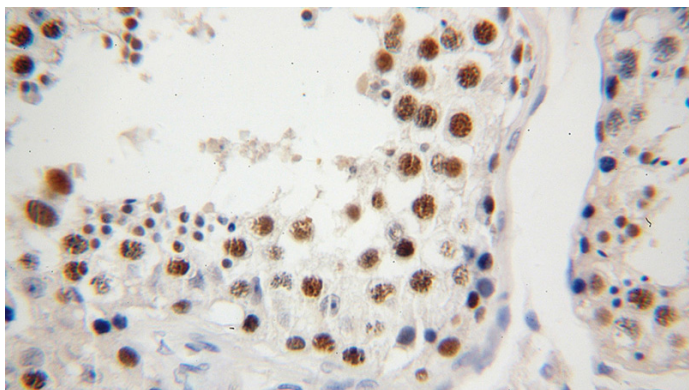
Recommended Dilution:



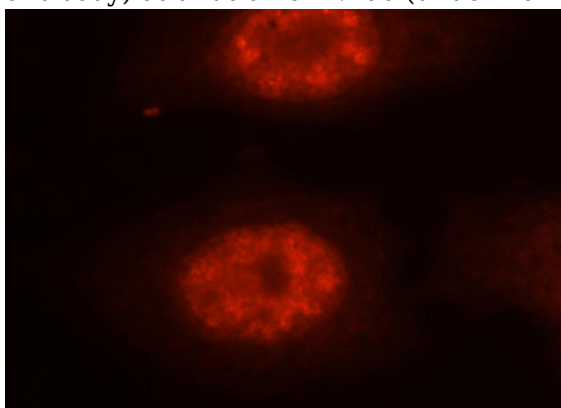
Immunohistochemical of paraffin-embedded human testis using Catalog No:112958(NASP antibody) at dilution of 1:100 (under 10x lens)

NASP antibody

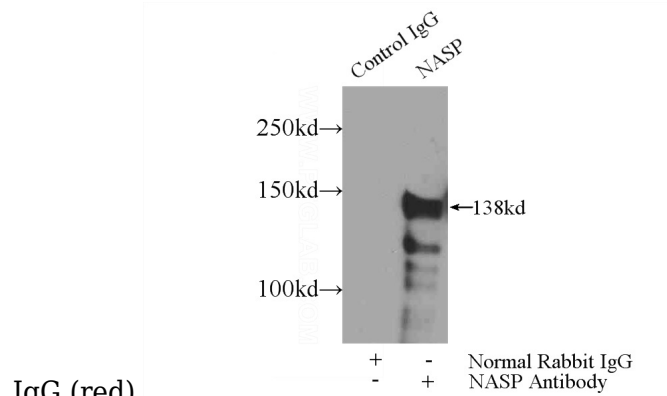
Catalog Number: 112958



Immunohistochemical of paraffin-embedded human testis using Catalog No:112958(NASP antibody) at dilution of 1:100 (under 40x lens)



Immunofluorescent analysis of MCF-7 cells, using NASP antibody Catalog No:112958 at 1:25 dilution and Rhodamine-labeled goat anti-rabbit



IgG (red).

IP Result of anti-NASP (IP:Catalog No:112958, 5ug; Detection:Catalog No:112958 1:1000) with mouse testis tissue lysate 4000ug.