

NAS1/SLC13A1 antibody



Catalog Number: 112957

Product name

NAS1/SLC13A1 antibody

Specificity

Human, Mouse; other species not tested.

Antibody description

NAS1/SLC13A1 Rabbit Polyclonal antibody. Positive WB detected in HEK-293 cells, mouse kidney tissue. Observed molecular weight by Western-blot: 66 kDa

Preparation

This antibody was obtained by immunization of NAS1/SLC13A1 recombinant protein (Accession Number: NM_022444). Purification method: Antigen affinity purified.

Formulation

PBS with 0.1% sodium azide and 50% glycerol pH 7.3.

Storage

Store at -20°C. DO NOT ALIQUOT

Clonality

Polyclonal

Ig Type

Rabbit IgG

Applications

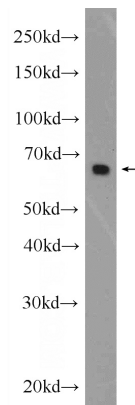
ELISA, WB

Dilutions

Recommended Dilution:

WB: 1:500-1:5000

Validations



HEK-293 cells were subjected to SDS PAGE followed by western blot with Catalog No:112957(SLC13A1 Antibody) at dilution of 1:1000